

CleverShuttle

Experts for On-Demand-Shuttle Operations. Next Stop: Autonomous.

Bruno Ginnuth, CEO







We truly believe that On-Demand-Shuttle Services will solve our traffic problems

CleverShuttle is Germany's leading On-Demand-Operator

← YESTERDAY

Biggest **B2C Operator** in
Germany

- › 5M riders
- › 1.400 drivers
- › 500 e-vehicles



CleverShuttle is Germany's leading On-Demand-Operator

← YESTERDAY

Biggest **B2C Operator** in Germany

- › 5M riders
- › 1.400 drivers
- › 500 e-vehicles

TODAY

Biggest **B2G Operator** in Germany

- › 16 projects in 1,5 years
- › 170 e-vehicles
- › Integrated in public transportation system

We align people, technology and processes to achieve high resource efficiency



People

A highly skilled and motivated team of 110 people with a proven record in operations at scale

Processes

7 years of On-Demand Operations experience translated into turnkey process know-how

Technology

A comprehensive Tech Stack specifically tailored for On-Demand solutions

CleverShuttle is Germany's leading On-Demand-Operator

← YESTERDAY

Biggest **B2C Operator** in Germany

- › 5M riders
- › 1.400 drivers
- › 500 e-vehicles

TODAY

Biggest **B2G Operator** in Germany

- › 16 projects in 1,5 years
- › 170 e-vehicles
- › Integrated in public transportation system

TOMORROW →

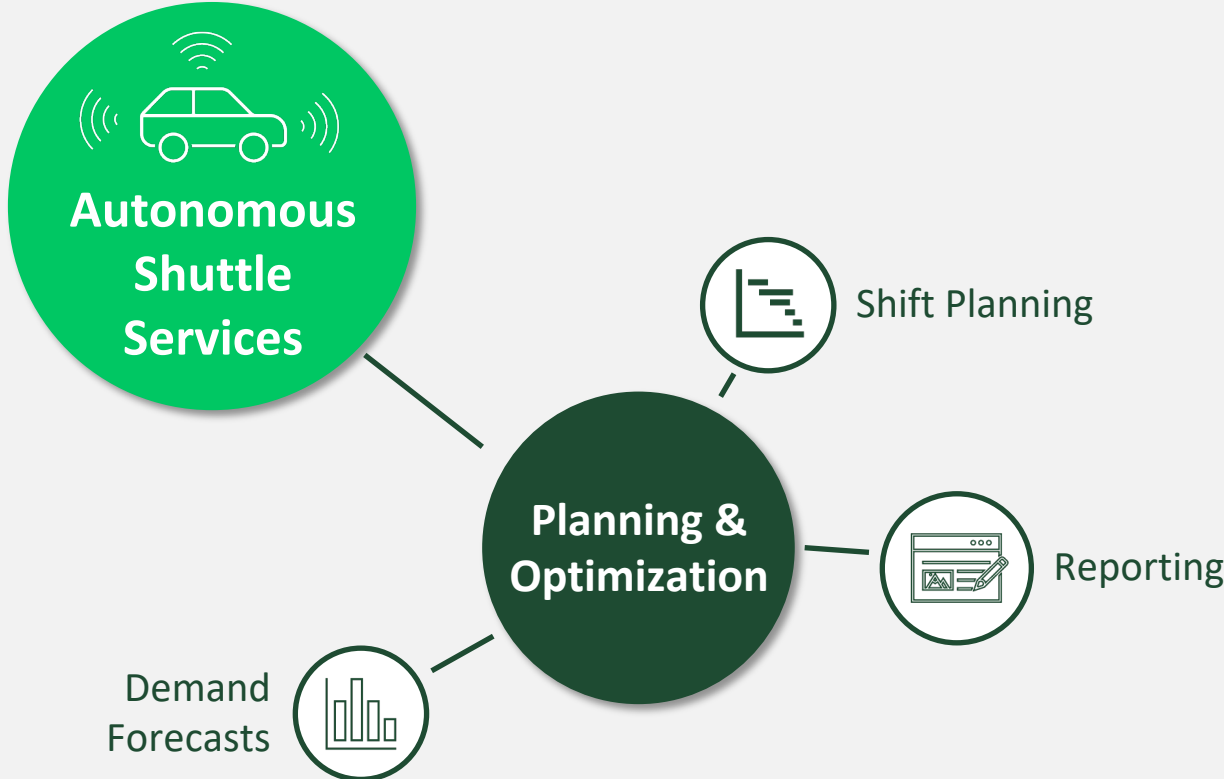
First **Level 4 Autonomous B2G Operator** in Germany

- › Launch in 2023
- › 25 up to 50 Vehicles
- › Integrated in public transportation system

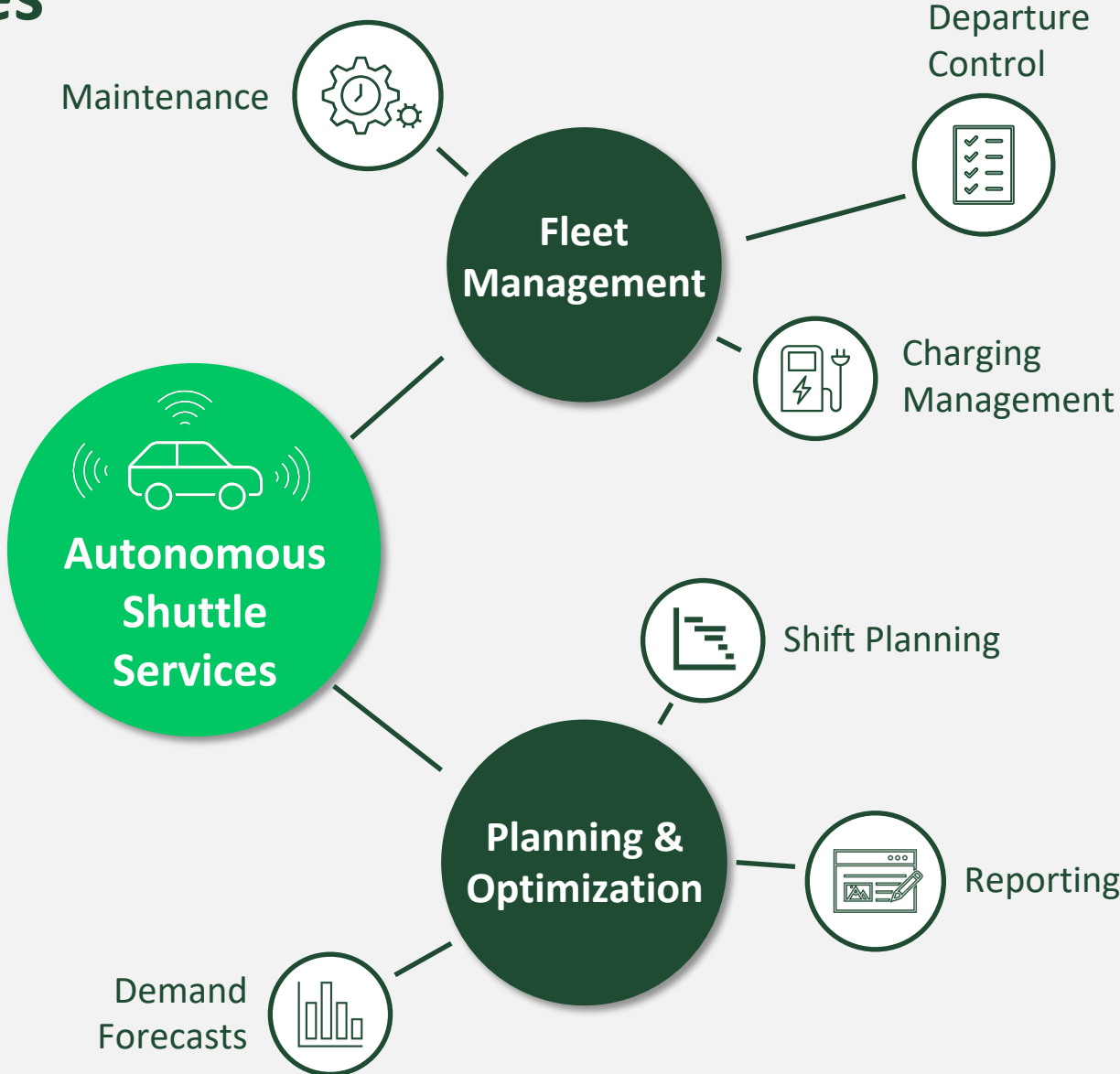
Our tools are focusing on core operational disciplines for autonomous shuttle services



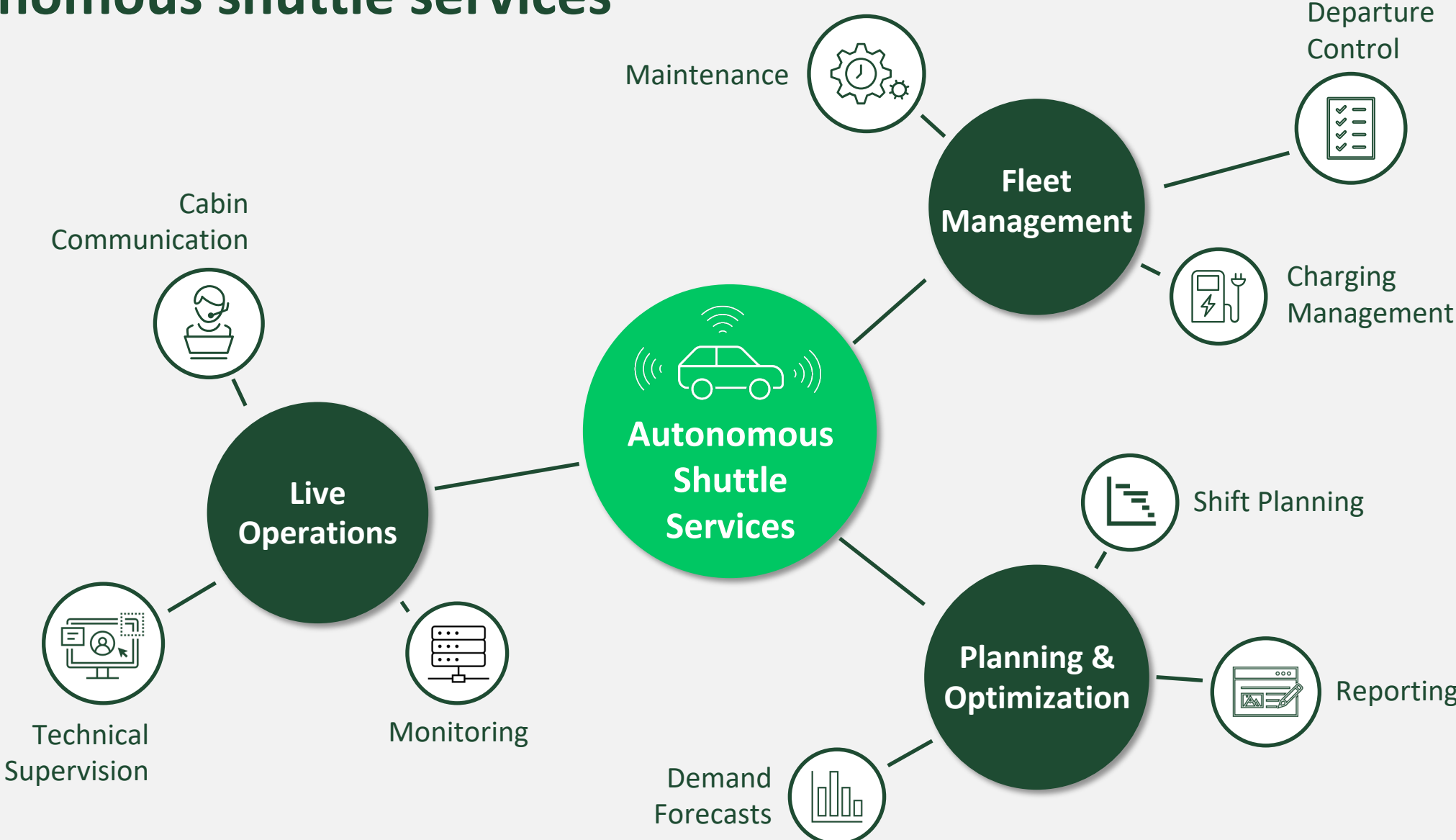
Our tools are focusing on core operational disciplines for autonomous shuttle services



Our tools are focusing on core operational disciplines for autonomous shuttle services



Our tools are focusing on core operational disciplines for autonomous shuttle services



An autonomous On-Demand Shuttle shift in four essential phases

Planning

1

- › Demand forecast
- › Shift planning
- › Vehicle assignment

Departure Control

2

- › Technical checks
- › Test rides
- › Cleanliness checks

Live Operations

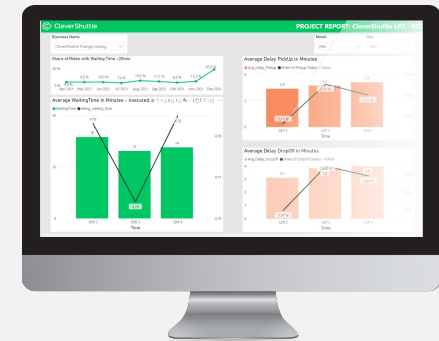
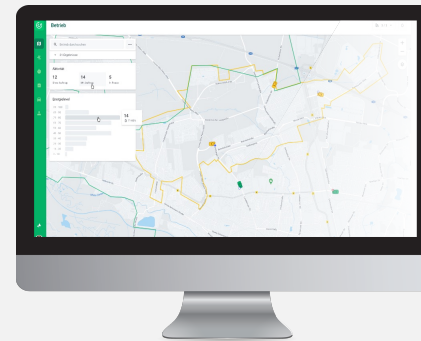
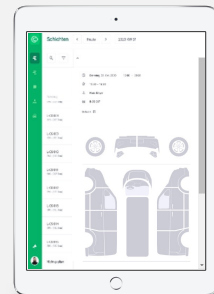
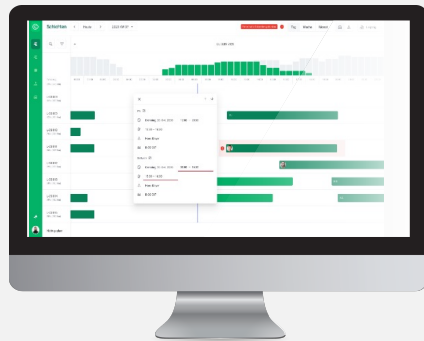
3

- › Fleet monitoring
- › Technical supervision
- › Communication

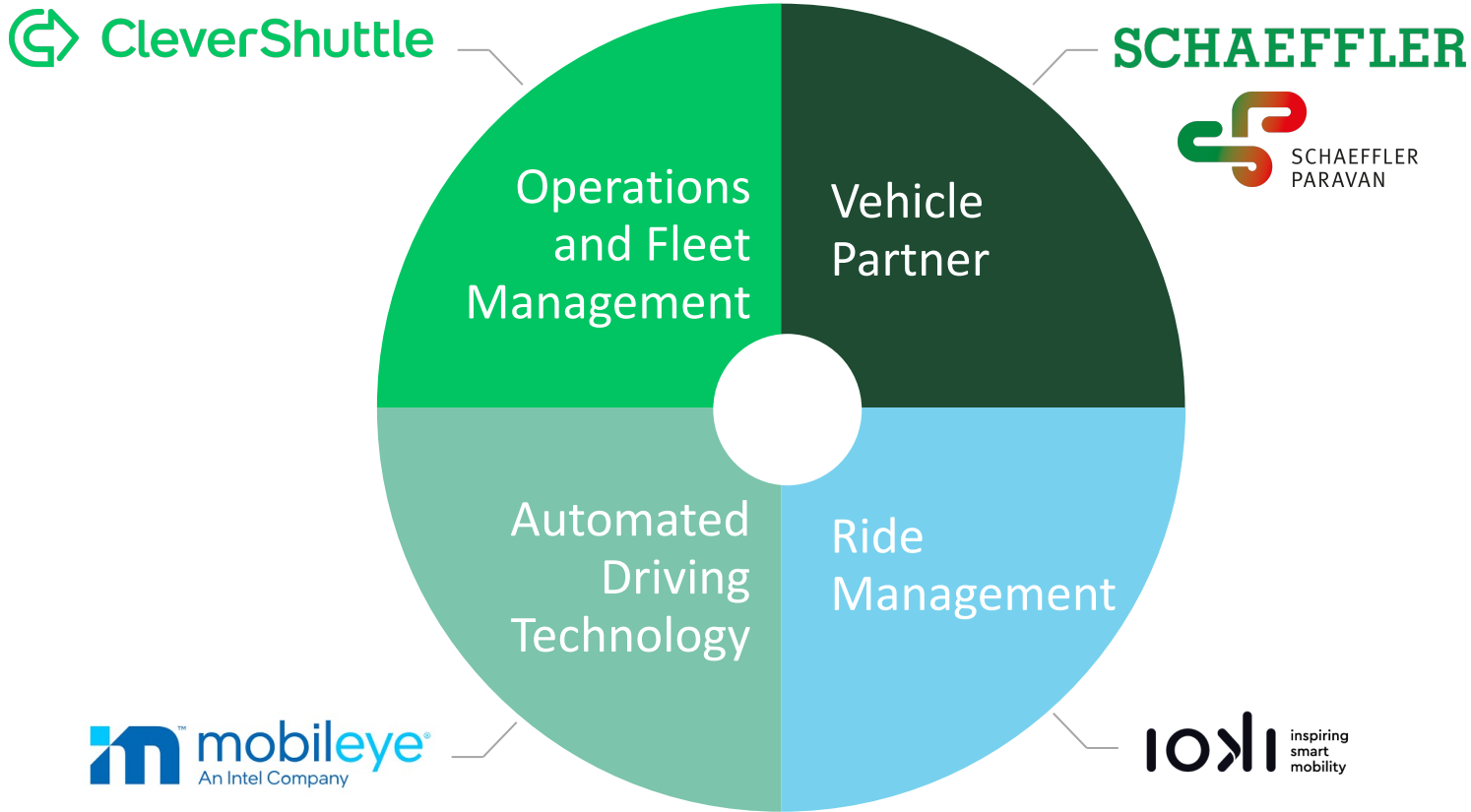
Optimization

4

- › Reporting
- › Analytics
- › Customer feedback



We are building a unique Ecosystem for Autonomous Shuttles





The right fit



Operations Expertise

In-depth expertise of On-Demand-Shuttle Systems



Entrepreneurial Mindset

A dynamic and fast-paced founder-managed company



Solid Shareholder Structure

Deutsche Bahn (majority shareholder) and Mitsui



At Scale

Previous high volume B2C experience



Bruno Ginnuth
CEO

GHT Mobility GmbH
Torgauer Straße 12-15, 10829 Berlin
b.ginnuth@clevershuttle.de
+49 162 615 66 23



Jana Dargel
STRATEGIC PROJECTS

GHT Mobility GmbH
Torgauer Straße 12-15, 10829 Berlin
j.dargel@clevershuttle.de
+49 1520 181 4745

