

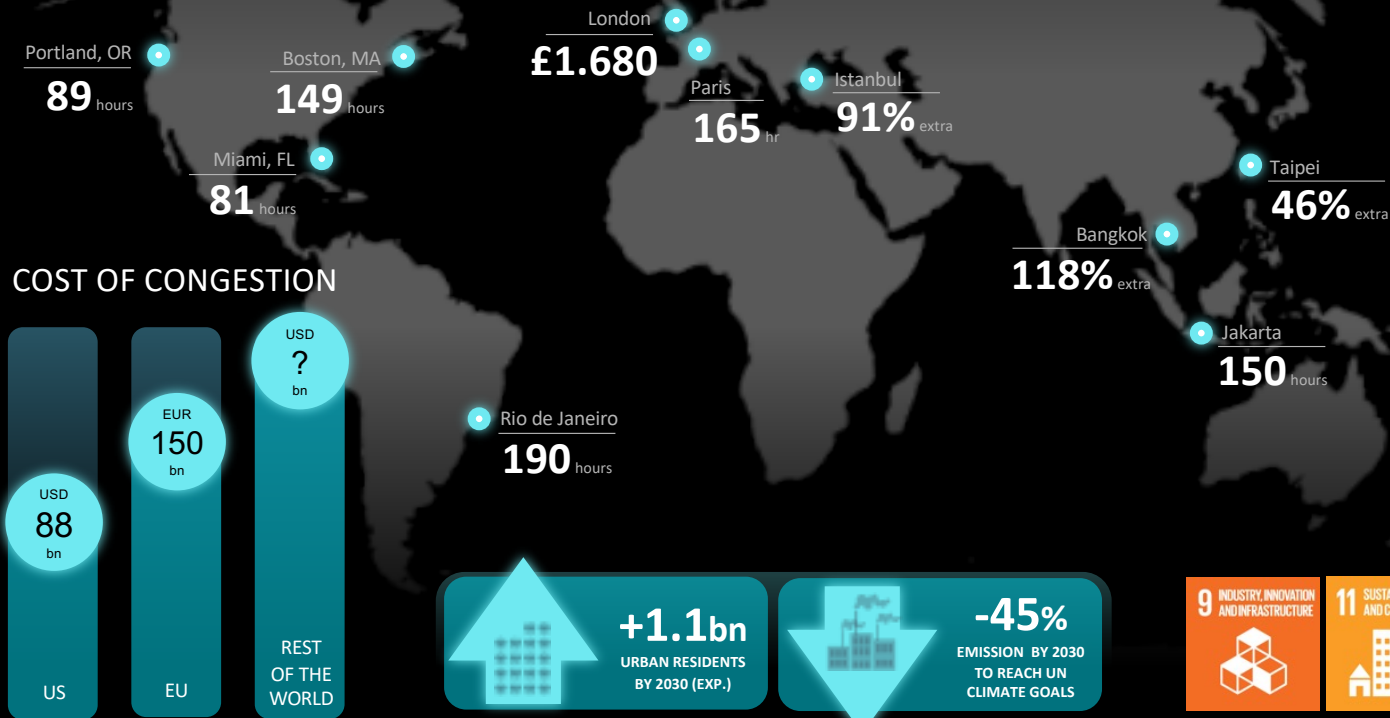
hyke

URBAN MOBILITY REDISCOVERED

2020 © HYDROLIFT-SMART CITY FERRIES AS - All rights reserved

WE NEED TO CUT POLLUTION AND CONGESTION

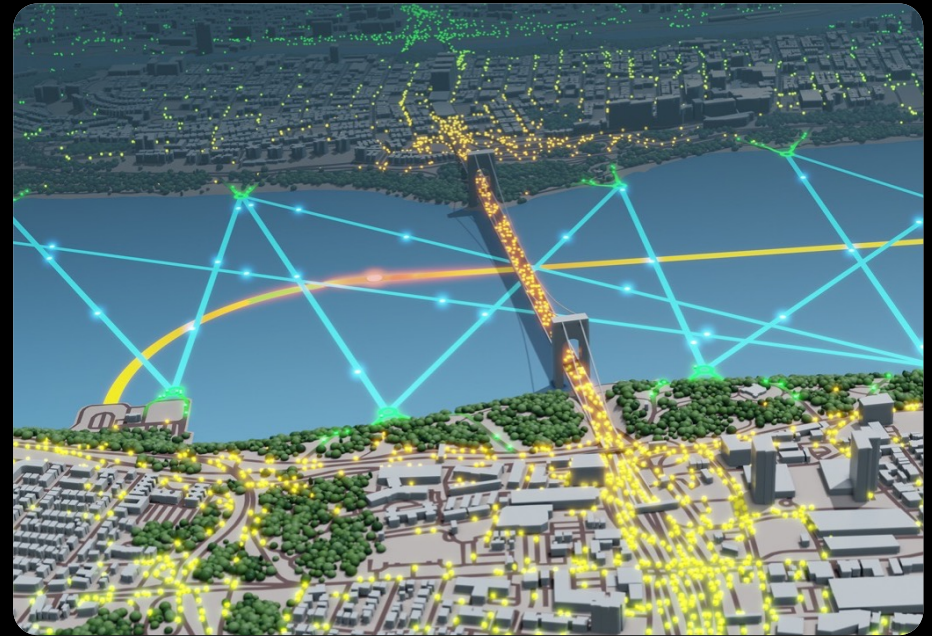
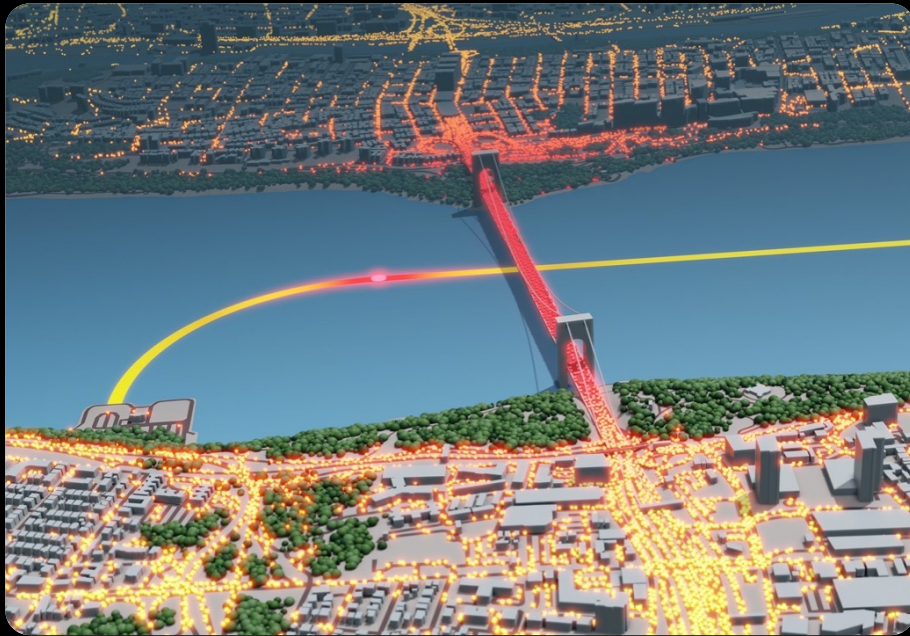
Invest in solving the problem rather than facing the cost of doing nothing



SOURCES: Inrix 2019 Global Traffic Scorecard, measuring number of hours spent unnecessarily in congestion per driver per year and where applicable multiplied with a money value to said hour

FROM LAST RESORT TO FIRST CONSIDERATION

Alleviate congestion • Reduce emissions • Save time



THE SMART FERRY

The world's first zero emission urban ferry designed for fleet autonomy



Modular



Multi-purpose



Connected



DIFFERENTIATION THROUGH INNOVATION

360-degree development approach



LIFE CYCLE SUSTANABILITY



Zero emission, energy efficient, modular design. Long lifespan materials

Up to **95%** reduction in CO² emissions*

*) Referenced against average annual diesel fuel consumption of 22,000 litres for a traditional ferry. CO₂ emissions from battery production of 100 kg/kW included

- Typical European electricity mix
- Typical Norwegian electricity mix



HIGH LEVEL AUTOMATION



Standardized navigation, sensor and control system



Fleet wide pilot logic, control and monitoring



Secure communication. On-shore redundancy



ML based fleet mgmt system for continuous operational improvement



OPERATIONAL FLEXIBILITY



Improved access gets users closer to destination



Capacity can move with shifting transport demand



Off peak excess capacity can be used for light cargo

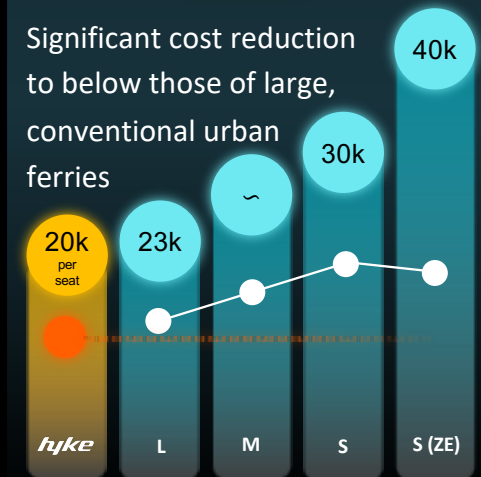


Smart city integration reduces downtime and improves user experience



COST EFFICIENCY

Significant cost reduction to below those of large, conventional urban ferries



- Hyke™ target CAPEX¹
- CAPEX (USD per seat)
- Hyke™ target OPEX²
- OPEX (USD/passenger-km)

A white and red Ruter ferry boat is moving through a narrow waterway in a city. The boat is on the left side of the frame, moving towards the right. The water is dark and reflects the sky. On the right side of the waterway, there is a stone wall with a metal railing. In the background, there are modern buildings, a crane, and a large colorful mural on a building. The sky is overcast with some light clouds. The text "Take a hytte!" is written in a white, cursive font across the middle of the image.

Take a hytte!