



# New vehicles and MaaS for car free cities and seamless Urban mobility

Morten Rynning  
morten@cityq.biz  
M: 90020538

 CITYQ

An aerial view of a modern urban mobility hub. The scene features a multi-level train station with several high-speed trains and regional trains. A wide, paved pedestrian walkway with a brick path and green spaces runs alongside the tracks. A blue tram is visible on a track. In the foreground, a glass-enclosed bicycle shelter is labeled 'Skøyen'. The background shows a dense urban environment with modern glass skyscrapers and residential buildings under a blue sky with scattered clouds.

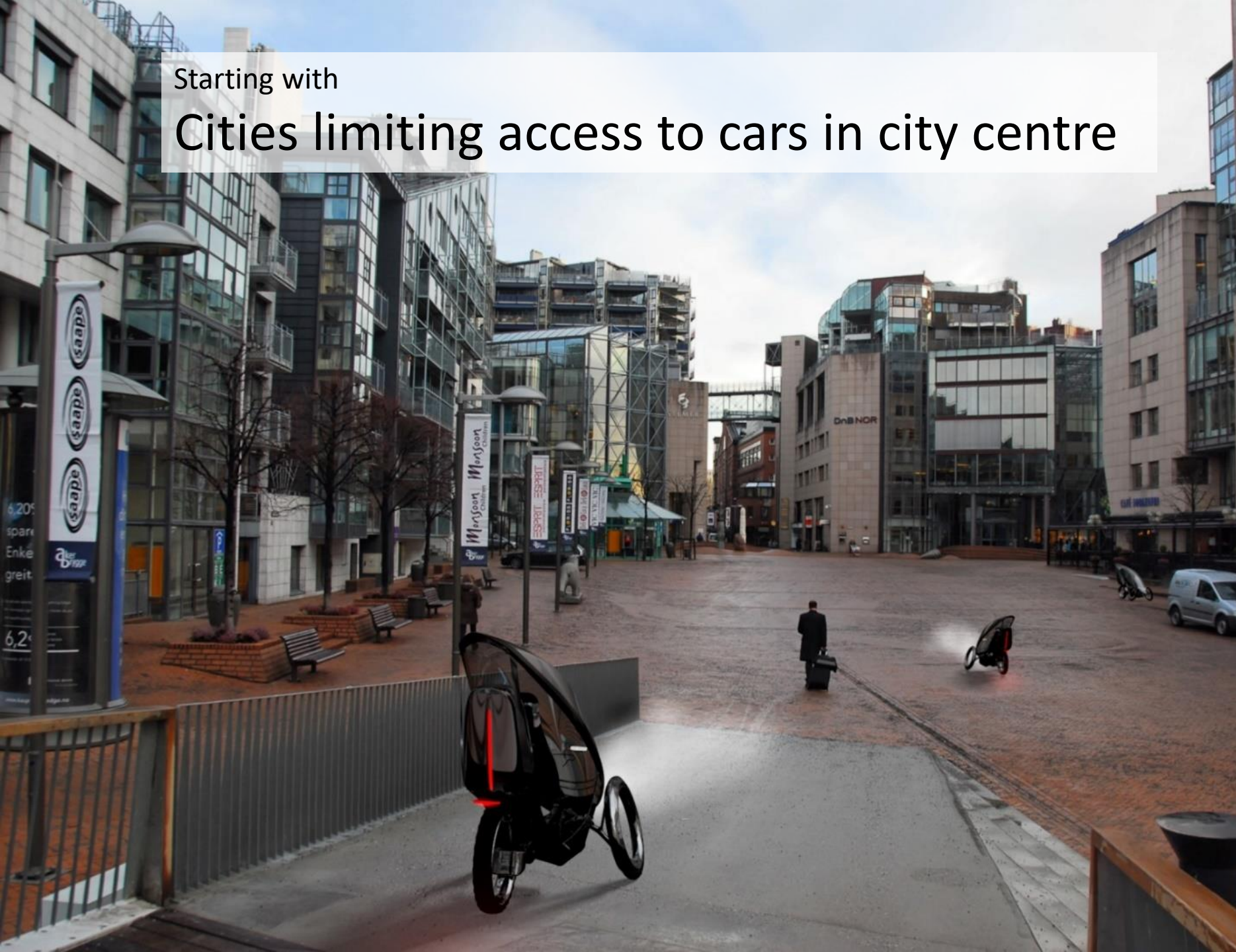
∞ CITY Q

Urban mobility hubs  
New infrastructure and personal mobility on top of  
existing infrastructure

Morten Rynning  
morten@citytrike.no  
M: 90020538

Starting with

# Cities limiting access to cars in city centre



Trending now:

Turning car parking into bike lanes  
Slashing the P-norm

Millennials skip driving license

Ebike sales booming

Political ambitions:  
Car free city center  
Share of bicycling from 4% to 20%

# Challenges for bicycling to replace cars in cities



Taking on passengers and riding your children to school or training

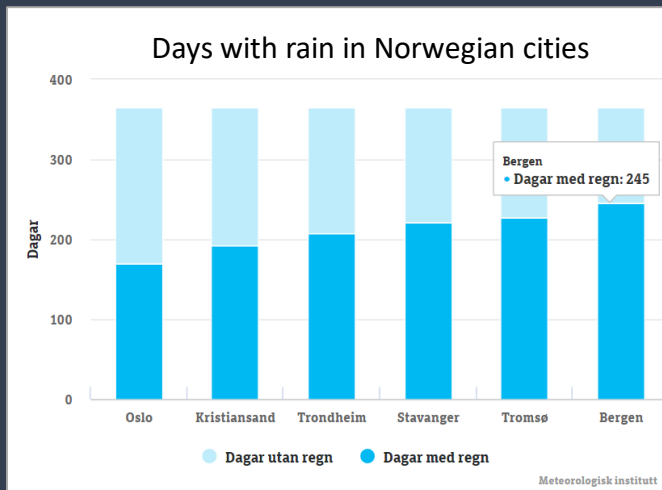


Cargo capacity is always a challenge  
....Even just for grocery shopping or training including a training bag

# Challenge - bad weather and cold climate

# 239 days

...of bad weather (rain or frost)



How to change the weather....

...or the vehicles - to reach the 20%



“Imagine to ebike dry and safely in dark and all weather”

∞ CITYQ



Reflex  
2 front lights  
Safety belts



# Year-round ebike – to replace cars in all weather



- **4 wheels Ebike** – max 25km/h, peddle
- **Anywhere** – bike lanes, car free areas
- **Everybody** - No driving license required
- **Freedom** – up to 100km, plus Solar panel
- **2 passengers** – plus lockable storage
- **MaaS** - Prepared for MaaS and sharing



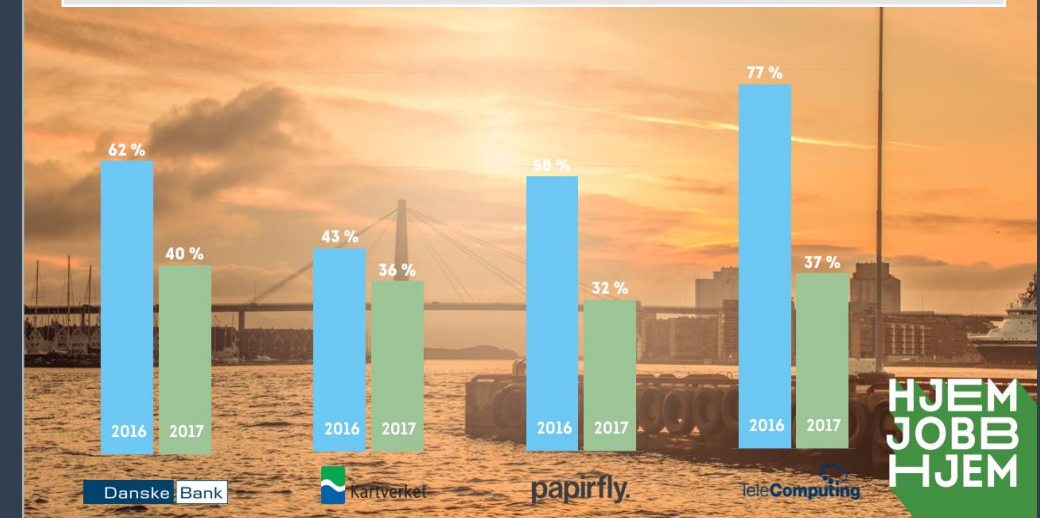
# When at work and going to meetings – with no car parking available



700 employees sharing 20 parking spots



## Drop in employees driving to work



### «Home-job-Home» – Kolumbus/Forus

Combo of free bicycles included in public transport service.  
Significant less car driving

### Company lease in cities

Profitable using LEV compared to 3-4 taxies a month



# Pilot arena for mobility innovation – both public and private maas



Shared City mobility planning – both the residential area – and local authority

Strategy as “pilot arena” and mobility innovation – research programs

Private and public Ride sharing  
Bikes, Ebikes, LEV, EV, cars

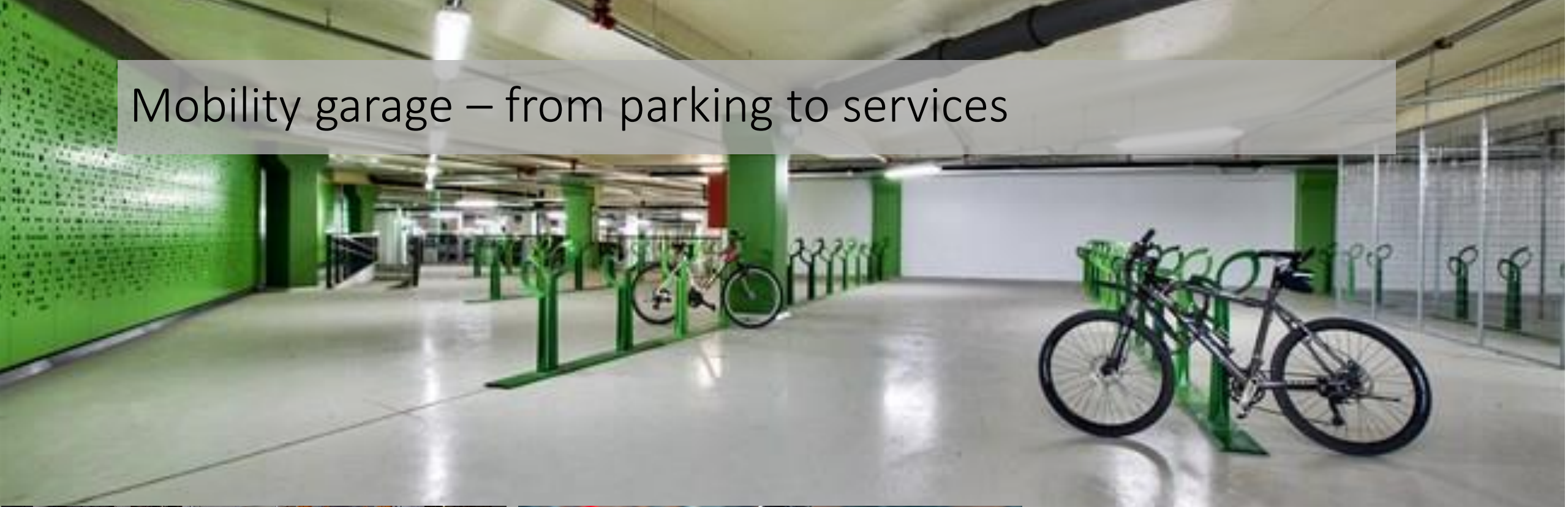
Public and private MaaS

# Urban Mobility hubs: Residential areas with pool of green vehicles – and barriers to car driving

A potential of reducing  
**70%** of car traffic from new  
residential areas



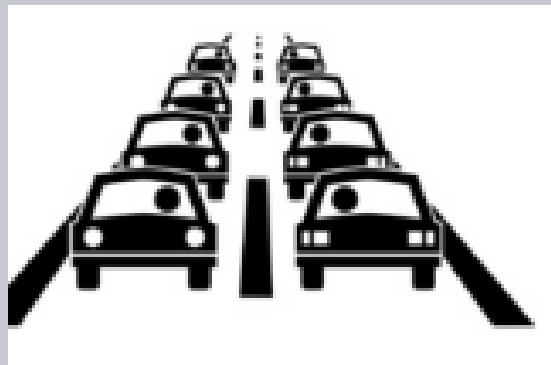
# Mobility garage – from parking to services



From car sharing to mobility and MaaS sharing

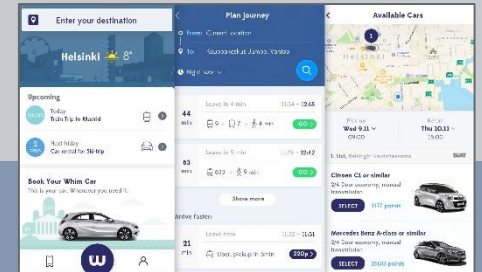
# Transport Sharing across multiple vehicles and services

Today



## Individual flexible Ride Sharing Pools

MaaS - City Mobility App – including platform managing cross travels, pools, security and flow



EBike



LEV - CityQ



EV Car – city/intercity



Truck and long distance car



# Shaping the future of urban mobility LEV may replace 50% of car traffic



ZBEE, L2E-SCOOTER - SWE



ARMADILLO L1E-B  
EBIKE - SWE



CITYQ, L1E-A EBIKE - NO



PODBIKE, L1E-A EBIKE - NO



TRIPL, L2E-SCOOTER - SWE



PAXSTER, L1E-B SCOOTER - NO

# Innovation co-operation – working together

Contact about pilots and research projects



Edit this form



NUMI  
Nordic Urban Mobility Innovation

Innovation Partnership

Network for pilot arenas

Connectivity

[info@cityq.biz](mailto:info@cityq.biz)



∞ CITYQ  
n u a i



Morten Rynning  
morten@cityq.biz  
M: 90020538

[www.cityQ.biz](http://www.cityQ.biz)

<https://www.linkedin.com/company/27151598/>

<https://www.facebook.com/CityQ/>