



RIDANGO



Passenger counting solutions
#Ruter Vendor Conference 2016-01

14.01.2016

BACKGROUND

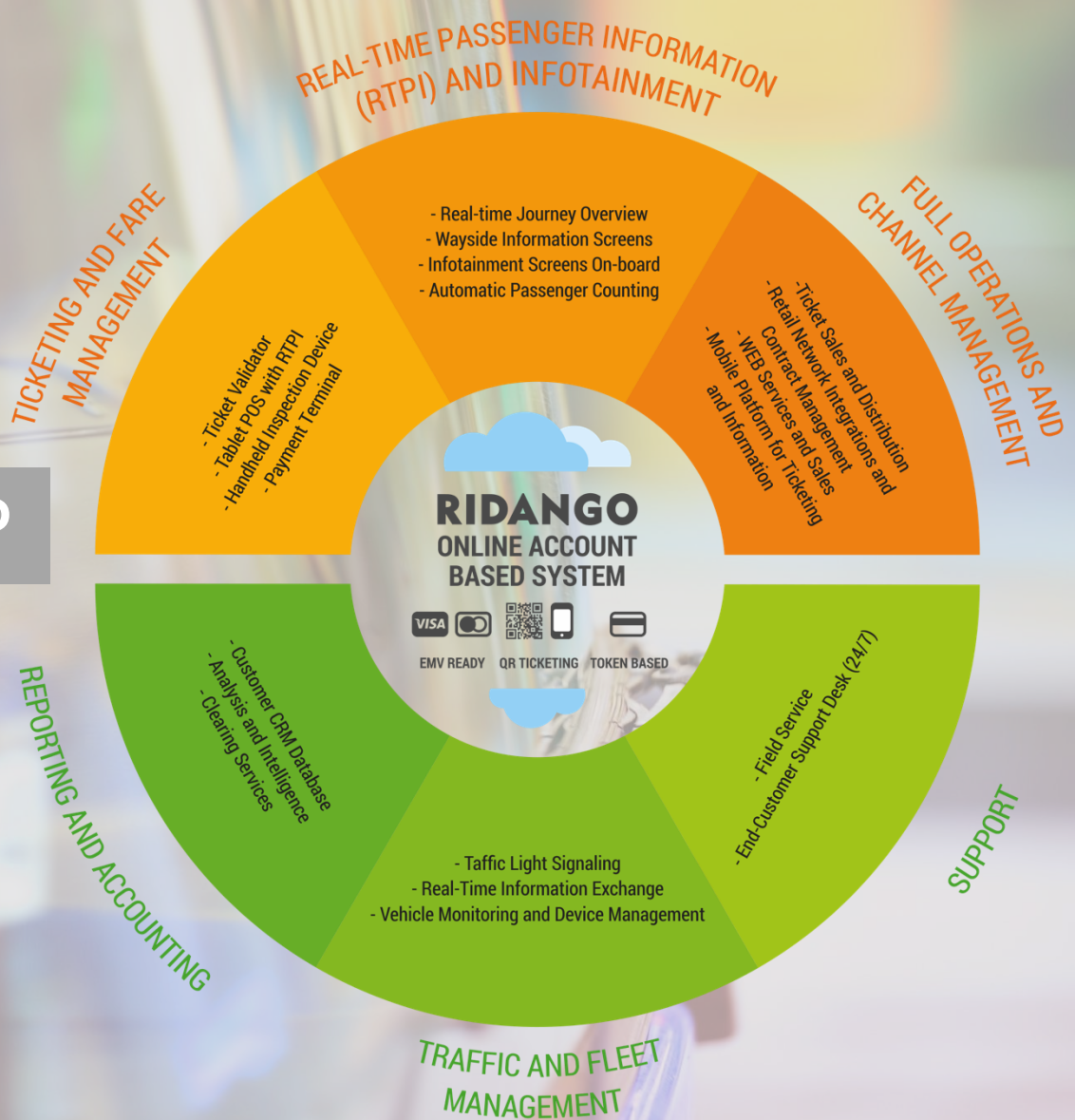
- History from ticketing since 2004 at Estonian Certification Center, spin-off company in 2009.
- Head quartered in Tallinn, Estonia
- Operating and focus areas in Baltic States, Scandinavia and Poland.
- Example of past and ongoing projects:
 - Estonia: Tallinn & Harju County, Tartu, GoGroup throughout Estonia, ATKO Group etc. Gotland (Sweden) 2013
 - Sweden: Västmanland, Transdev AirportCoaches, Södermanland County, Mälardalen trains



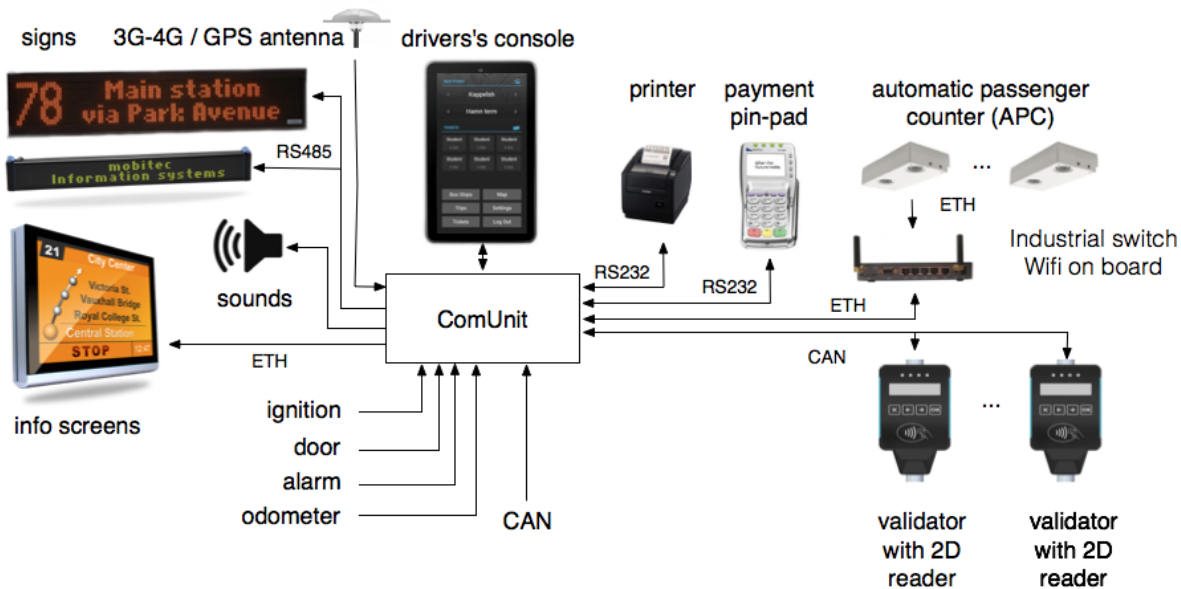
RIDANGO

ONE-STOP SHOP

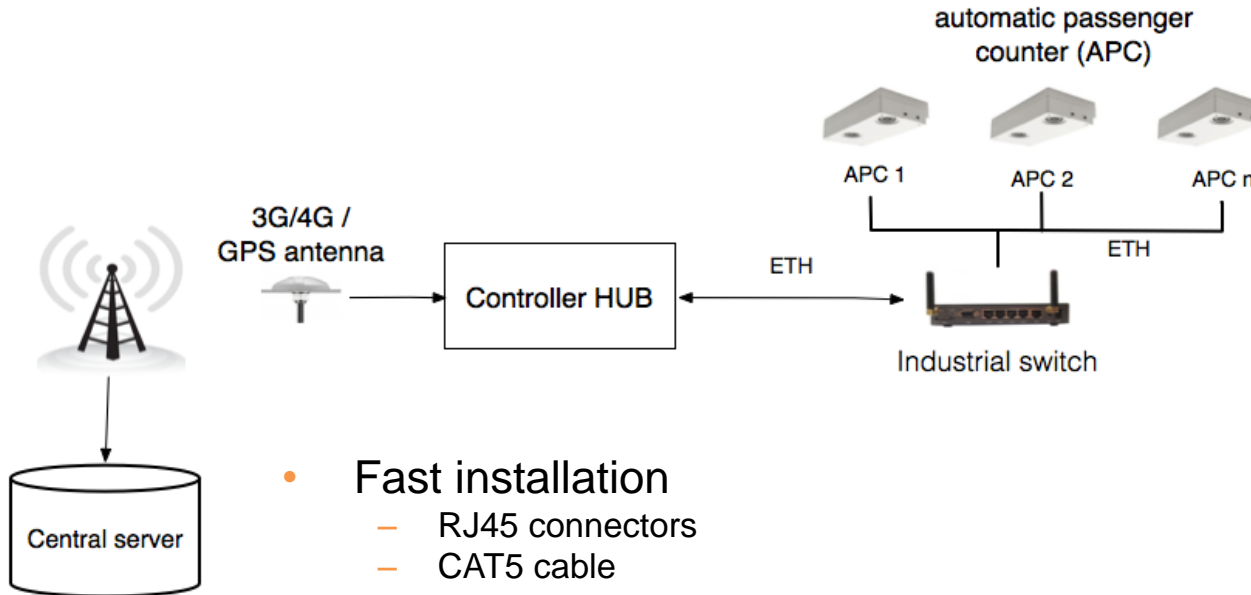
**FOR TRANSIT
AGENCY**



SYSTEM OVERVIEW – MODULAR AND EXTENDABLE



AUTOMATIC PASSENGER COUNTING

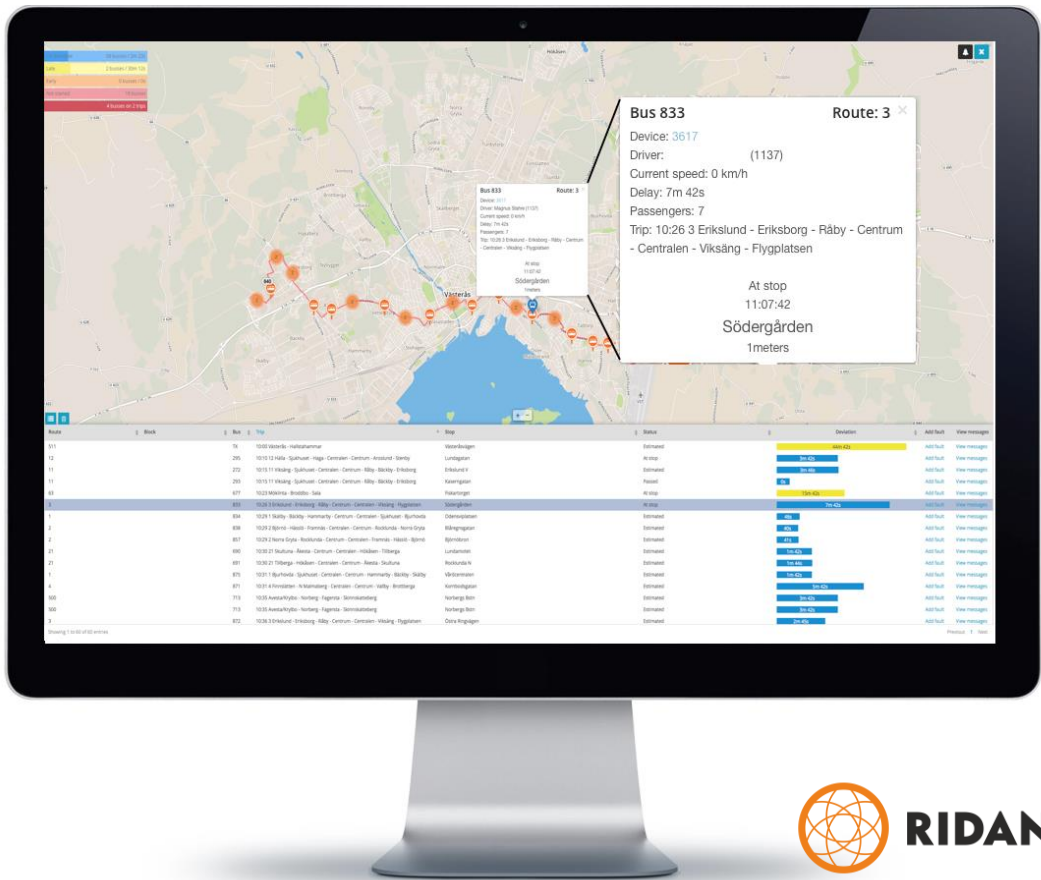


- **Fast installation**
 - RJ45 connectors
 - CAT5 cable
- **Extensible**
 - If needed more Switches can be added
- **Online synchronized**
 - Standard and widely used 3G/4G connection

APC DATA - online

Real time view

- Passenger count from dispatch view – current count of passengers on board
- Data is synchronized in online mode



APC DATA – historic reports

Analytics:

- Stop
- Line / trip
- Area / Zone
- Etc.

Statistics:

- Line profitability
- Trip capacity
- Validations versus boarding
- Etc.

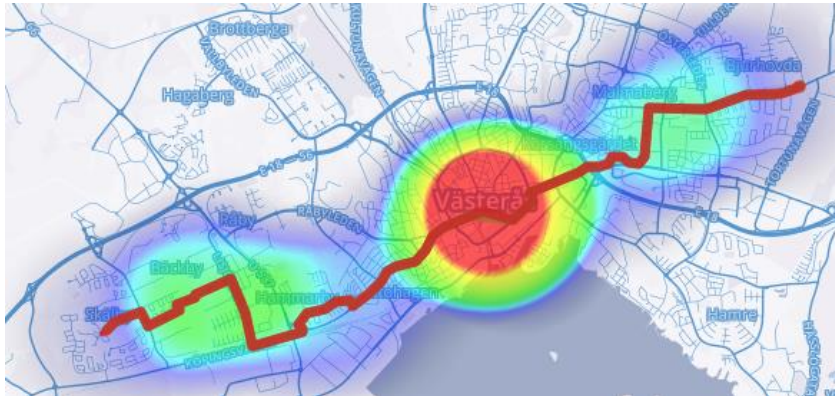
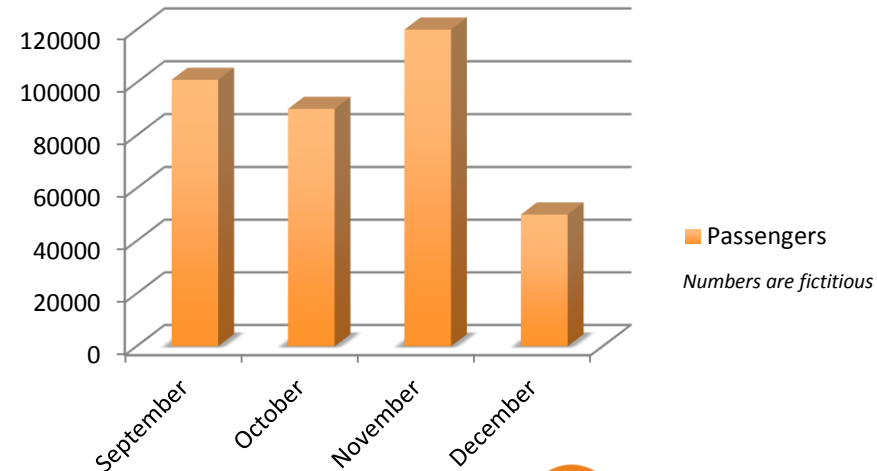


Image from Allbinary www.allbinary.se
APC Data from Ridango system in Västmanland www.ridango.com



Questions and Answers

- How should Ruter move forward in order to achieve a future model where potential on board systems and equipment (passenger counting included) are based on an open, service oriented architecture, open interfaces and shared functionality, in accordance with common European standards?
- What considerations are important to make regarding the acquisition of a future-oriented solution for passenger counting?
- What different solutions and delivery models for passenger counting should be considered, and which are preferred?
- How can Ruter utilize counting data as a customer information element?
- What do you consider important that Ruter do, and how, in order to make it possible/interesting for you to participate in a tender?

APC data as a customer information element

Real Time vehicle capacity

Mobile applications



Bus stop screens

A photograph of a bus stop screen displaying real-time vehicle capacity information. The screen shows a table of bus routes and their departure times, along with a red banner indicating that line 515 is 80% full.

VL Sjukhuset		10:16:51	
LINJE	DESTINATION	FÖRSTA	ANDRA
551	Arboga via Valskog	10:37	12:37
550	Skinnskatteberg via Kolsva	11:02	13:02
515	Västerås	11:05	12:05
550	Eskilstuna via Kungsör	12:04	14:04
550	Eskilstuna via Köping - Kungsör	13:04	15:04
550	Skinnskatteberg via Kungsör-Köping	15:02	16:02

Linje 515 Västerås departure 11:05 is 80% full



RIDANGO

Ragnar Nakus, Project Manager

ragnar@ridango.com

+372 534 993 66