

BLOCKCHAIN

CONNECTED CITY USE CASE

DIGITAL PAYMENTS
FOR A TRUSTED WORLD

Worldline

BLOCKCHAIN

Long standing Expertise

- **+350 trained engineers**
- **+150 Workshops with clients**
- **+30 Round tables**
- **+40 keynotes**
- **+30 PoCs/PoVs**
- **+40 Articles**
- **Several patents in progress**
- **Partnership with Multichain**

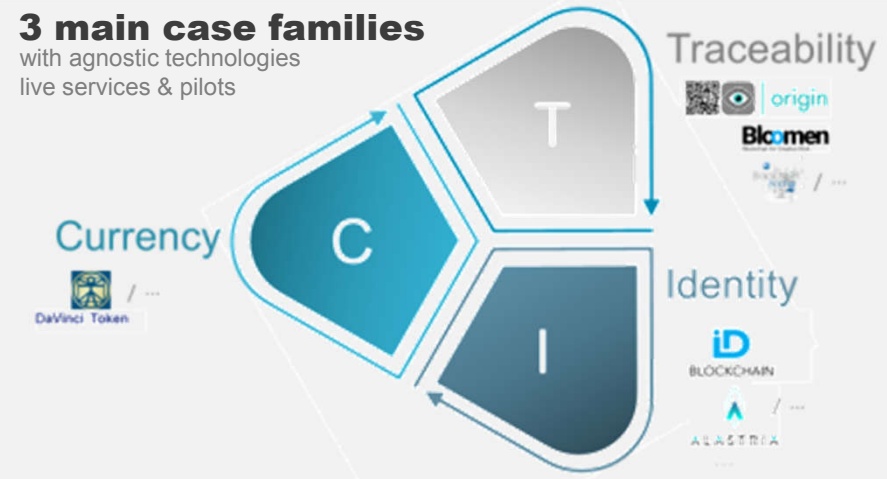


External collaboration (universities, consortiums, EU entities, etc.)



3 main case families

with agnostic technologies
live services & pilots



Implementing real projects



Worldline

TRANSPORT

TICKET



Incurred investments

Issuing : (Prepaid) "PayPerUse"
Tickets

Selling : Point of Sales (1 tx for 5
journeys av.)

Validating : Terminals

Worldline

TRANSPORT

NFC NAVIGO



Incurred investments

Issuing : (Prepaid) "Bundled*" NFC Cards

Selling : Point of Sales (1 tx for unlimited journeys)

Validating : Terminals

* Or PayPerUse with Navigo Easy

Worldline

TRANSPORT

NFC CARD



Incurred investments

Issuing : (Postpaid) PayPerUse
NFC Bank Cards

Selling : Point of Sales

Pricing : Journey computation
Payment (1x per journey)

Validating : Terminals

Worldline

TRANSPORT

NEXT GEN



**CHEAPER &
PREPAID**

**TRANSPORTER
BACK IN CHARGE**

Incurred investments

Issuing :

(Pre/postpaid/PayPerUse/Bundled)

NFC App & QR code

(Don't rely on 3rd Party (Banks))

Selling : Point of Sales / web

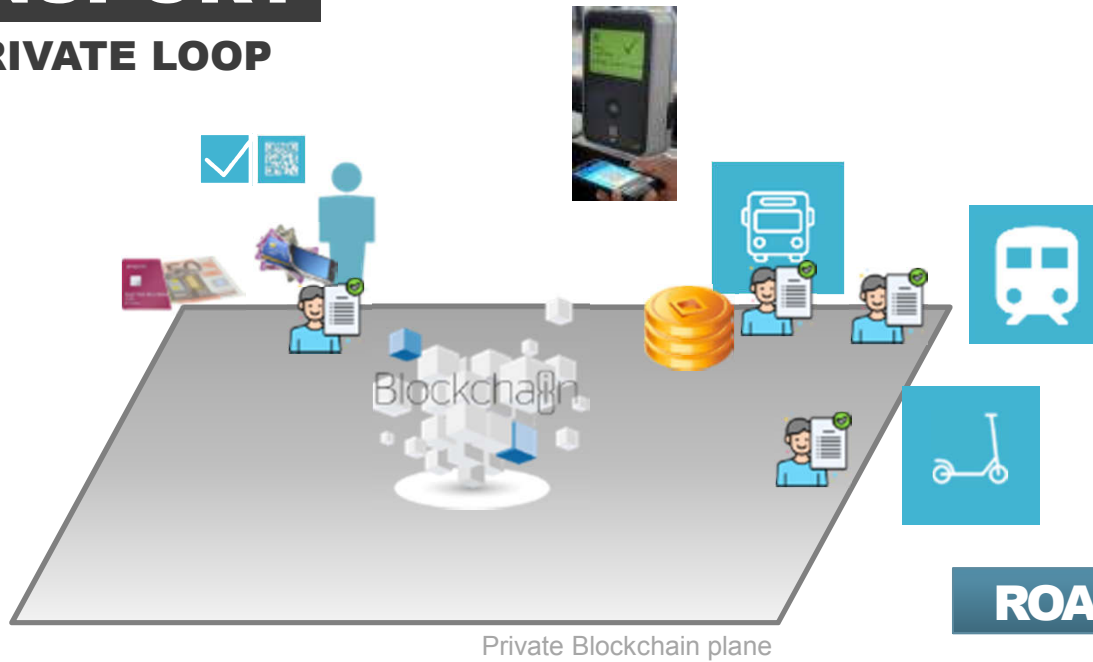
Pricing : Journey computation
Compensation / Payment (1x per
journey or period)

Validating : Terminals

Worldline

TRANSPORT

OPEN PRIVATE LOOP



Incurring investments

Issuing : (Pre/postpaid) NFC App & QR code

(Don't rely on 3rd Party (Banks))

Selling : Point of Sale-web

Pricing : Multi providers Journey computation

Compensation / Payment (1x per journey)

Validating : Terminals

**TRANSPORTER
BACK IN CHARGE**

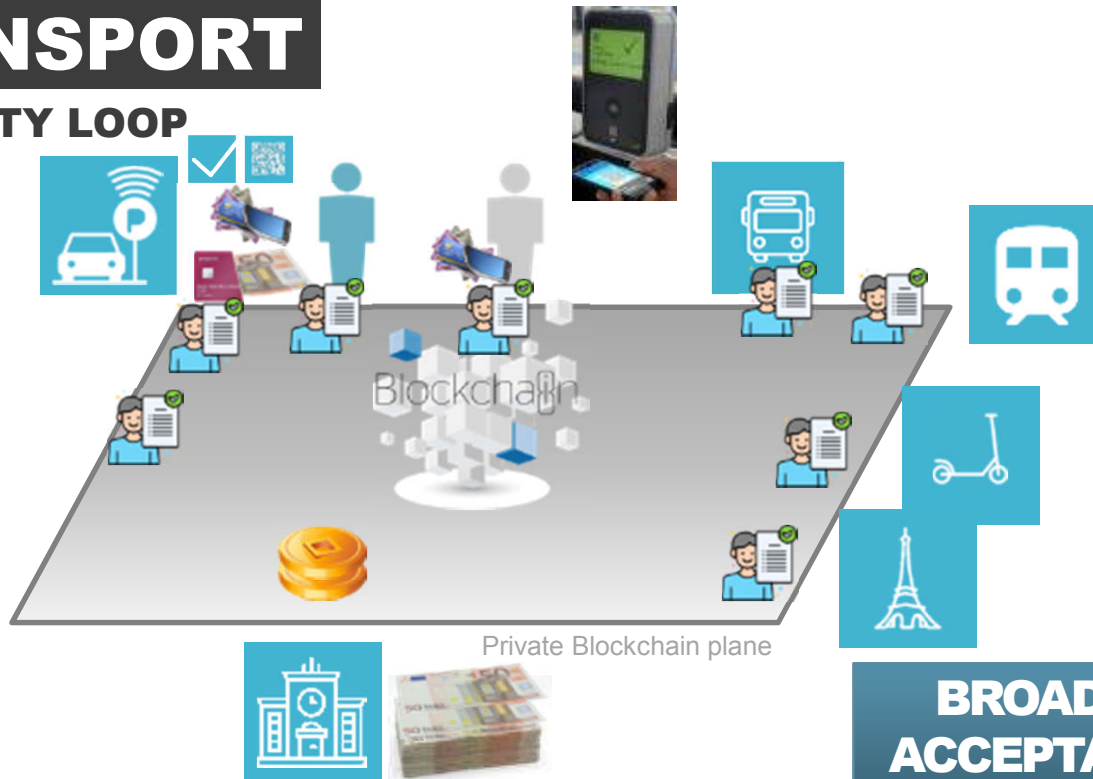
ROAMING

**CHEAPER &
PREPAID**



TRANSPORT

OPEN CITY LOOP



Incurred investments

Issuing : (Pre/postpaid) NFC App & QR code
(Don't rely on 3rd Party (Banks))

Selling : Point of Sales - web

Pricing : **Multi providers** Journey computation

Compensation / Payment (1x per journey)

Validating : Terminals

**TRANSPORTER
BACK IN CHARGE**

**CHEAPER &
PREPAID**

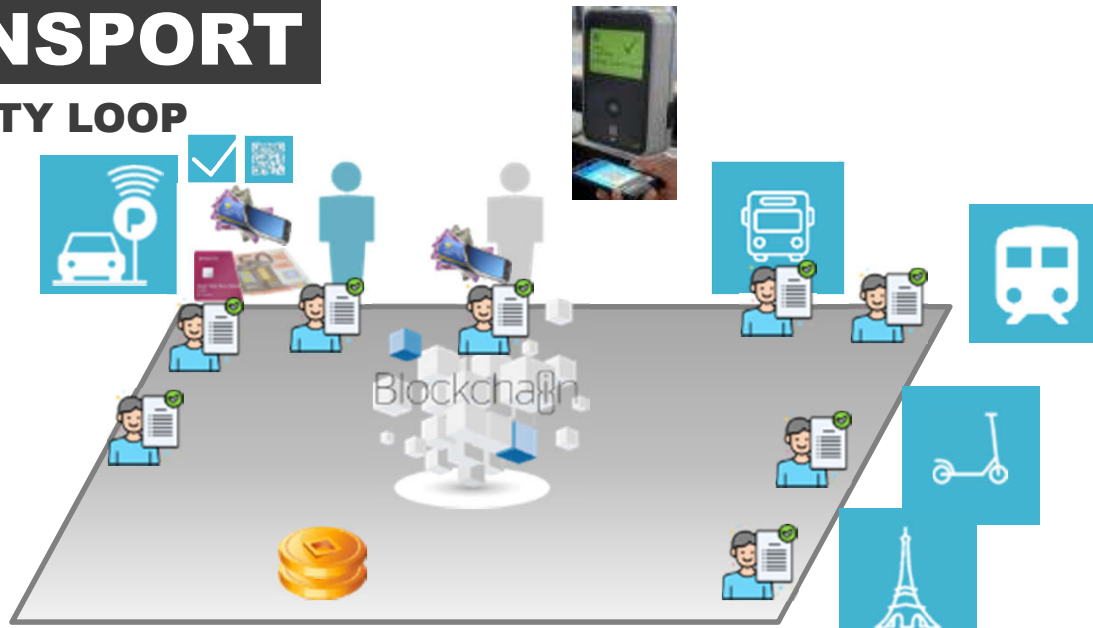
**BROADER
ACCEPTANCE**



Worldline

TRANSPORT

OPEN CITY LOOP



SECURED WALLET

INSTANT ACCEPTANCE NETWORK

1 PLATFORM FOR ALL SERVICE PROVIDERS

REAL TIME CONTROL OF ASSETS' USAGE (LIMITS, BUNDLES)

OPEN TO 3RD PARTY' ASSETS

OPEN TO PUBLIC ASSETS

COINS + FIAT PAYMENTS

ENABLE THE REAL MULTI-PARTY 'TRANSPORT SERVICE' OF 2020s

Worldline

Q & A

DIGITAL PAYMENTS
FOR A TRUSTED WORLD

Worldline