





## **CONSAT TELEMATICS**

REALTIME TO THE WORLD,  
OG SANNTID TIL NORGE





# APC

Automatic Passenger Counting

From Statistical Tool to Business Intelligence

Internet of Things

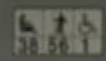
Real Life Applications



5 Torp västtrafik  
Lindasgatan 1 min  
Brunnsparken 7 min  
Kungssportsplatsen 5 min  
Valand 3 min  
Berzeligatan  
Kronhusbanan

Passager 16:52

STOP



# Commercial Infotainment

## When running advertisement on in-coach infotainment systems

- APC will enable business model based on actual exposed viewers.
- Ability to play selected advertisement when given event is fulfilled eg. 20 passengers on-board.





01

Serlandsparken  
Dyreparken

127

nettbuss



CITARO



PP 91327

ARNEKLÆR



## External signs

- Show information to passenger on stoppoint.

16

Buss 20% full



16

Buss 80% full



16

Buss full,  
ersättningsbuss följer.





# Stop signs

- Display available seats on stop points .
- Prediction of available seats based on both Real Time and historical data

CONSAT		Kungsporsplatsen läge B		16:33
Linje	Destination	Passagerare	Avgår	Därefter
3	Marklandsgatan		1	9
4	Möln dal		9	18
5	Torp		5	12
7	Tynnered		3	14
16	Eketrä gatan		5	16





## Emergency information

- Automatic central warning & information in case of emergency.
- How many passengers on bus?



 Hønes - Tvedt



# Travel Planner

## Travel Planner APC Integration

- Distribution of travel information on various platforms
- Alternative way of presenting available seats numeric or approximatively.



Mainline

10 seats available

Crossbound

No seats available

Need a pick up?

Where do you need to get up?

Where will arrive in ...

1	Mainline 10 seats available	10 min
2	Crossbound No seats available	12 min
3M	Memorial	20 min
2	Crossbound	43 min

View Live Map of the route





# Passenger Flow

## APC as Statistical tool

- Make contributions to City Planning and development



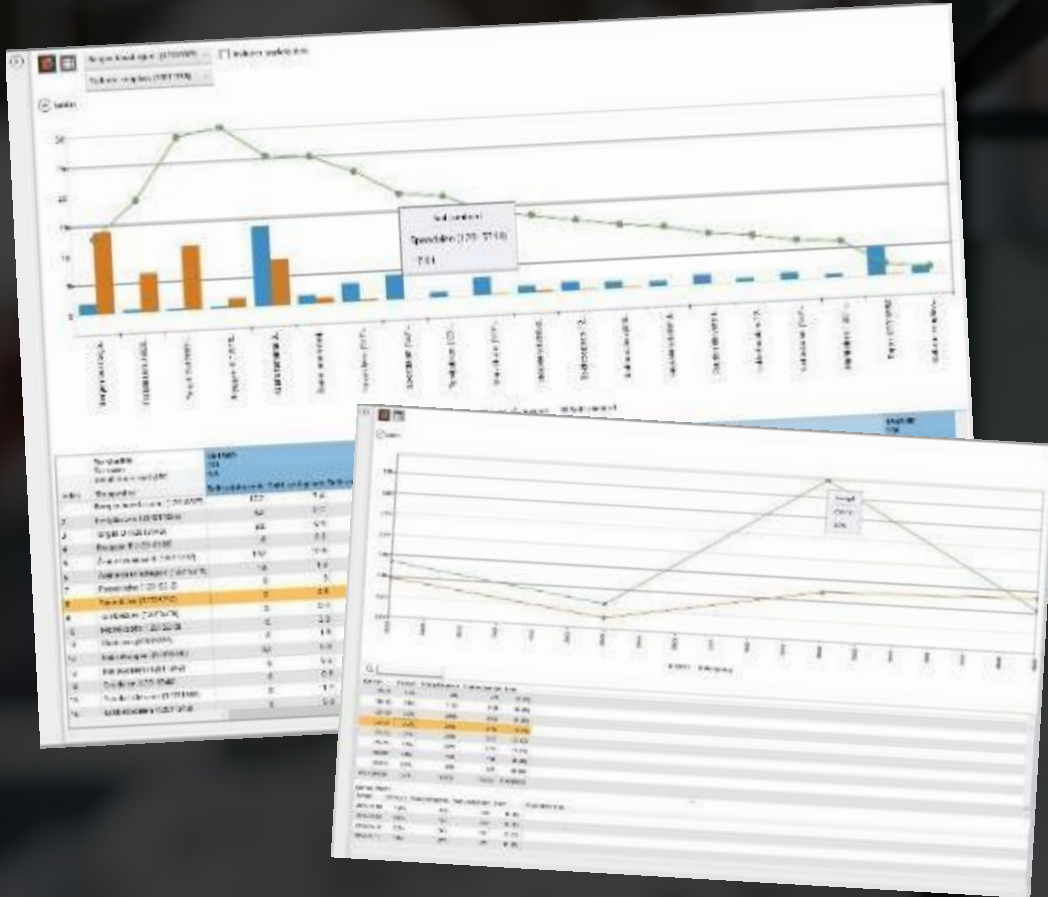
# Reports

## Business Intelligence Reports

- Compare actual number of passengers with actual number of validated tickets
- Trend Analyze

## Classic Reports showing

- Information regarding number of passages pr. Journey/line etc
- Statistical reports pr. Bus Stop







[emil.pettersen@consat.se](mailto:emil.pettersen@consat.se)  
[fredrik.darin@consat.se](mailto:fredrik.darin@consat.se)