

# *edeva*

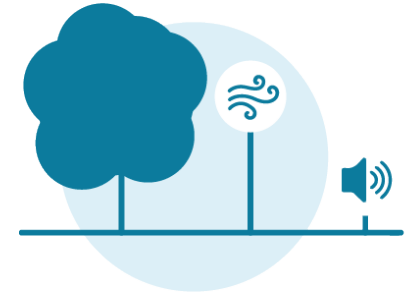
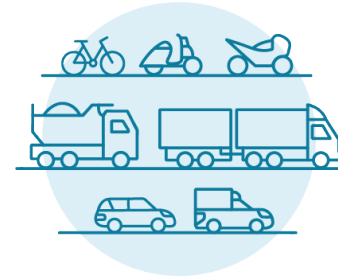
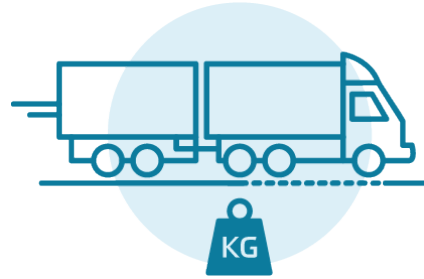
Karin Wiklund

+46 13 474 61 03

[karin.wiklund@edeva.se](mailto:karin.wiklund@edeva.se)



# INTRODUCTION



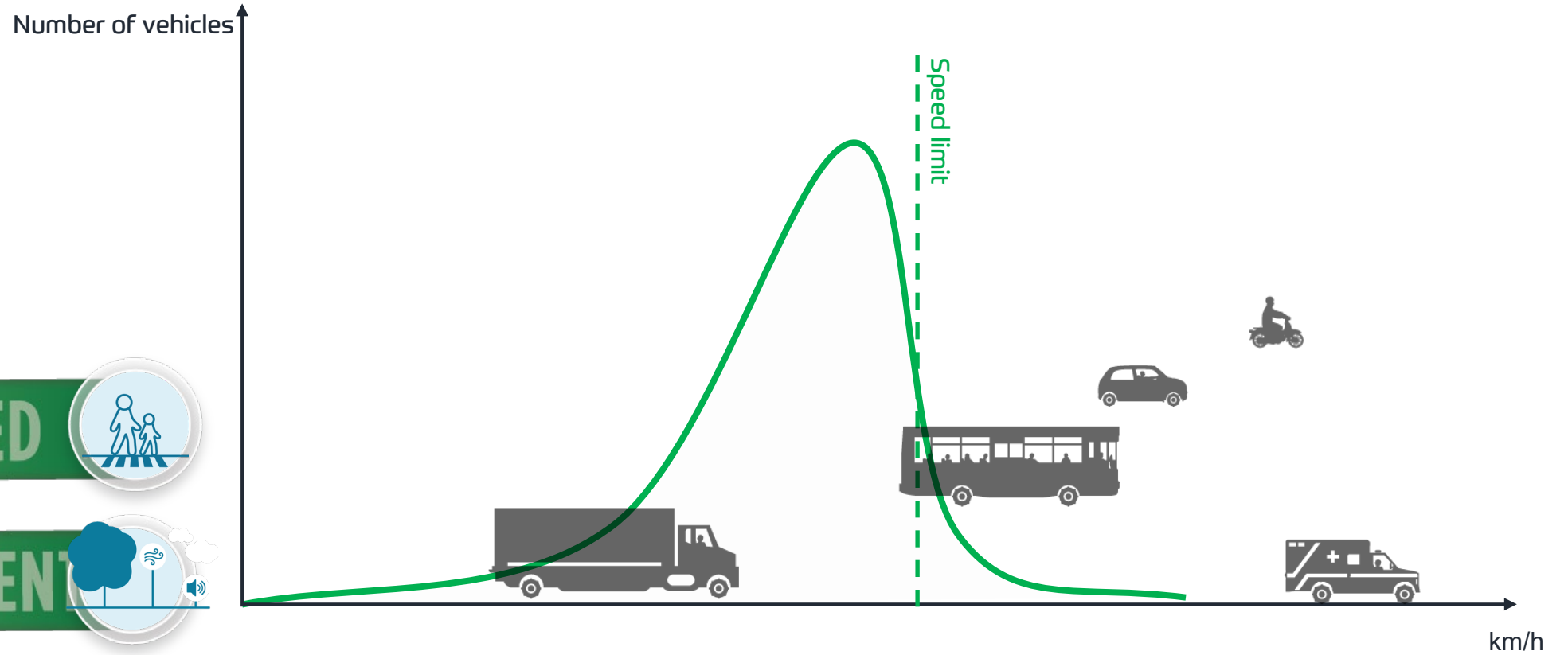
# actibump®

a friendly reminder  
to improve road safety



*edeva*

# IDEAL TRAFFIC FLOW



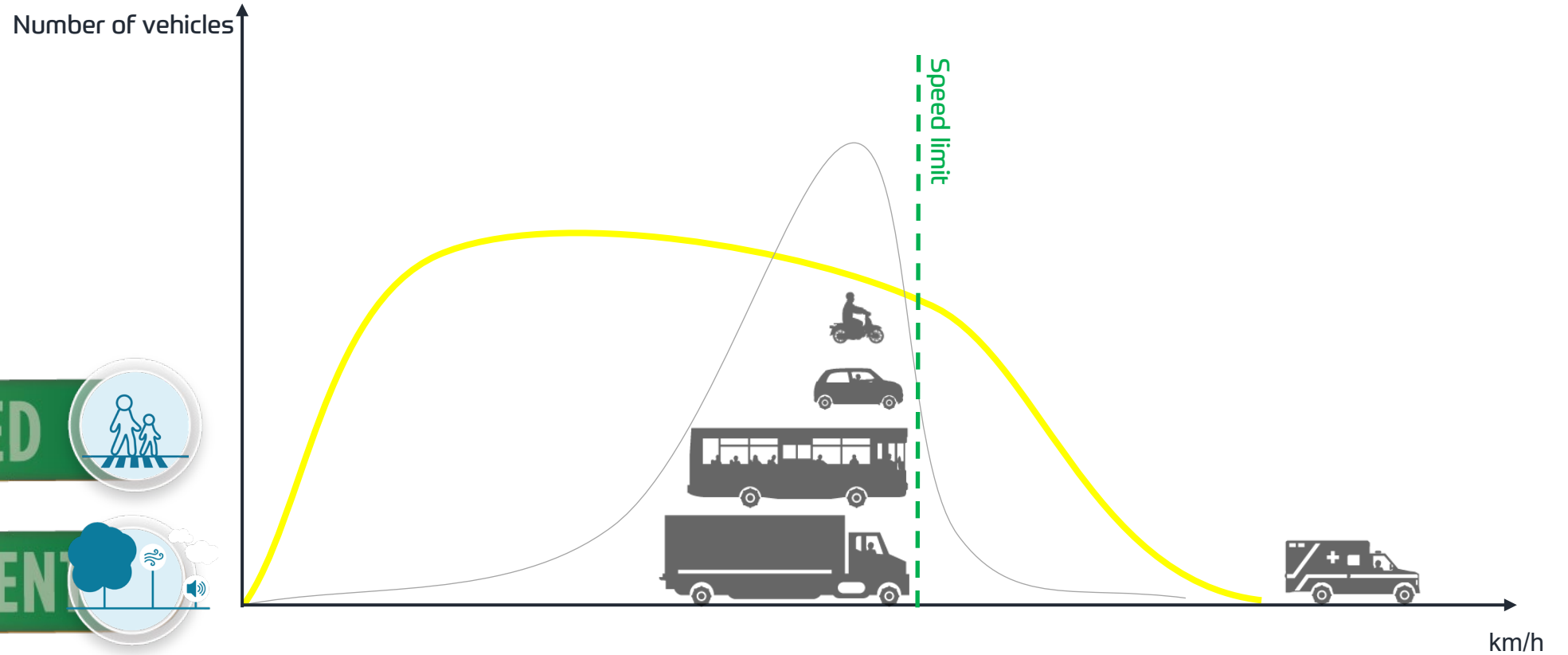
SAFE SPEED



ENVIRONMENT



# COMPARISON - STATIC SOLUTIONS



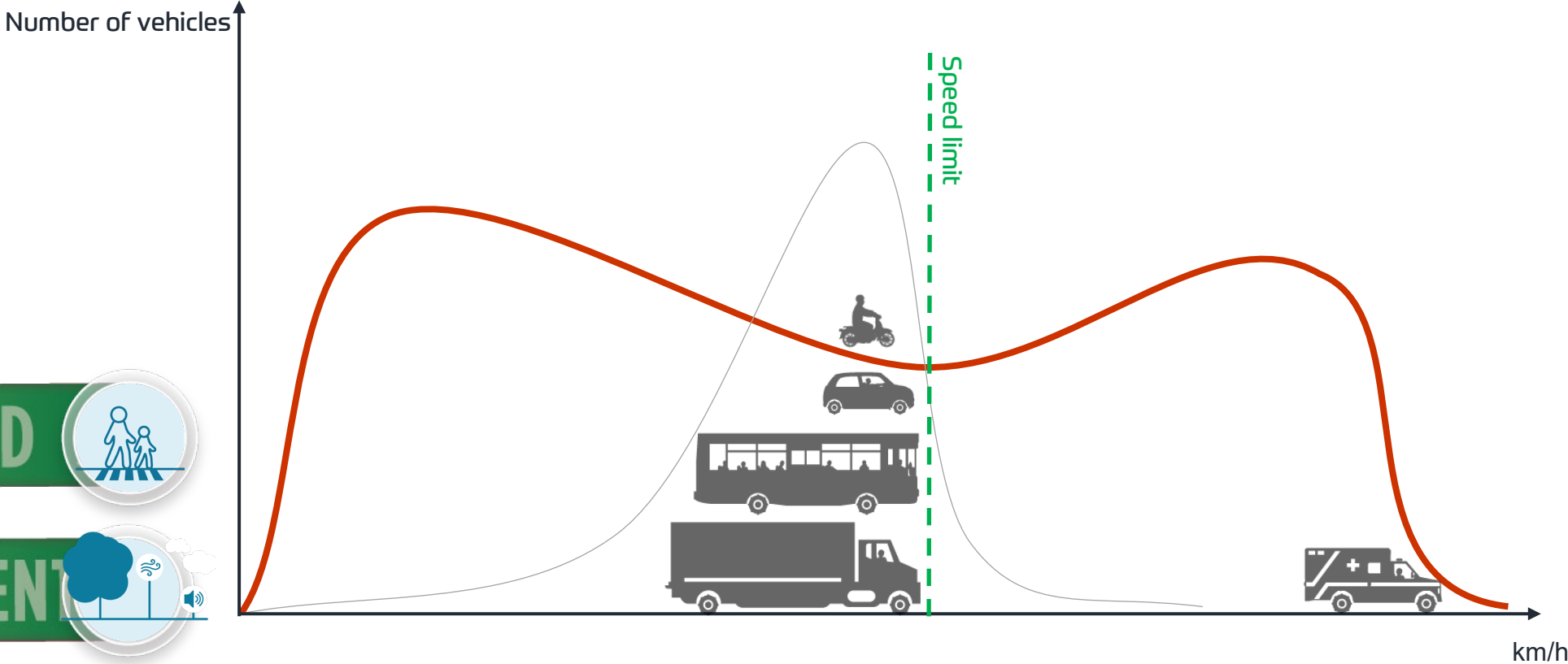
SAFE SPEED



ENVIRONMENT



# REGULATING SOLUTIONS



**SAFE SPEED**



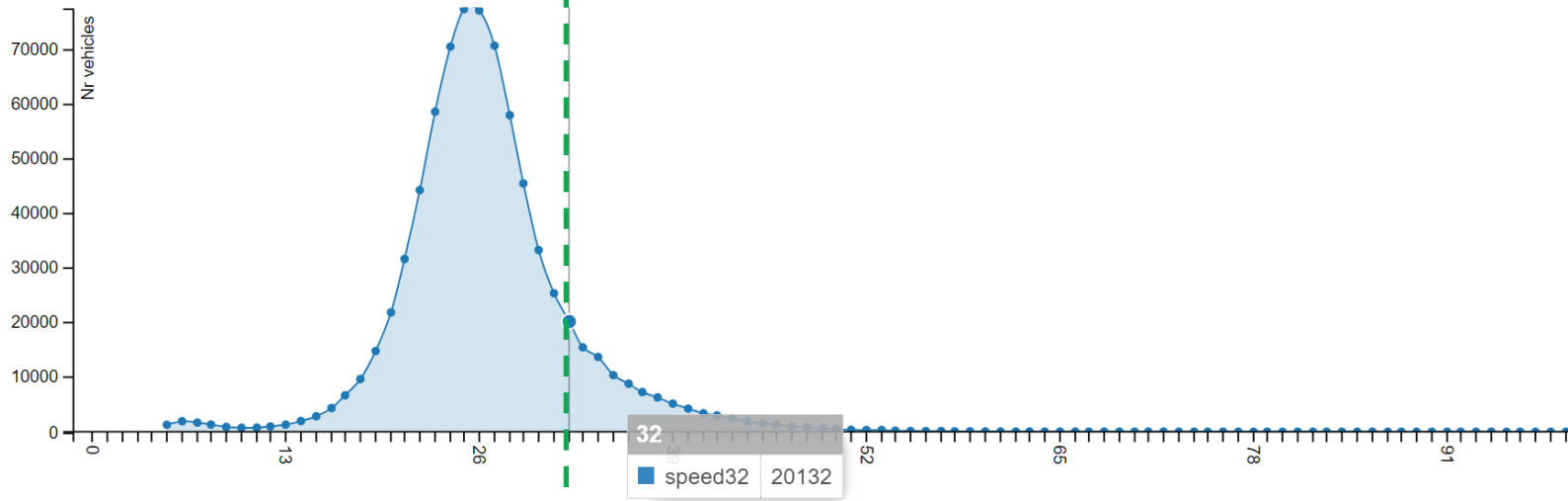
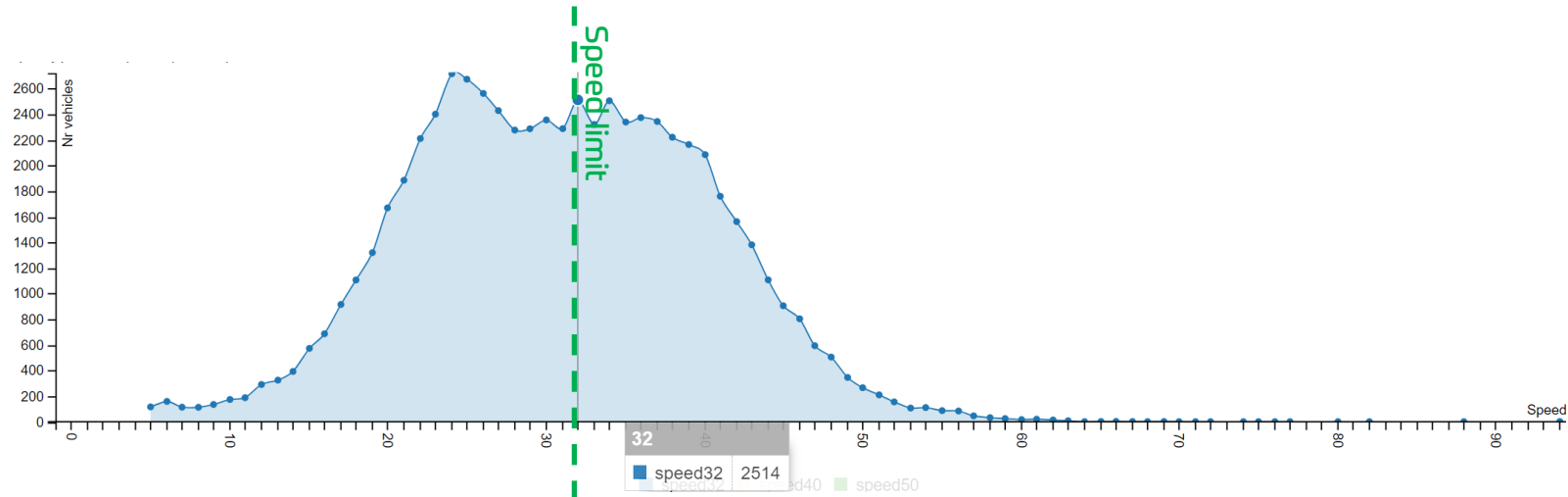
**ENVIRONMENT**



# COMPARISON

	Actibump	Static speed bump	IFD
Noise sensitive environments	√		
Vibration sensitive environments	√		
Large amounts of traffic	√		
Public transport	√		
Emergency vehicles	√		
Where you want very low speeds	X		
Where you want the sign posted speed	√		
Around many vulnerable road users	√		

# ACTUAL RESULTS





# ACTUAL RESULTS

- The 85th percentile speed decreased to the speed limit  $\pm$  3 km/h on all sites
- The share of drivers that were speeding decreased significantly on all sites
- Noise was reduced, where measures
- Vibrations were below the threshold for mild disturbance, where measured
- Very few complaints from inhabitants
- Since then Vestland fylkeskommune has made their own evaluation:

<https://www.vestlandfylke.no/nyheitsarkiv/2022/fallem-fekk-trafikken-ned/>

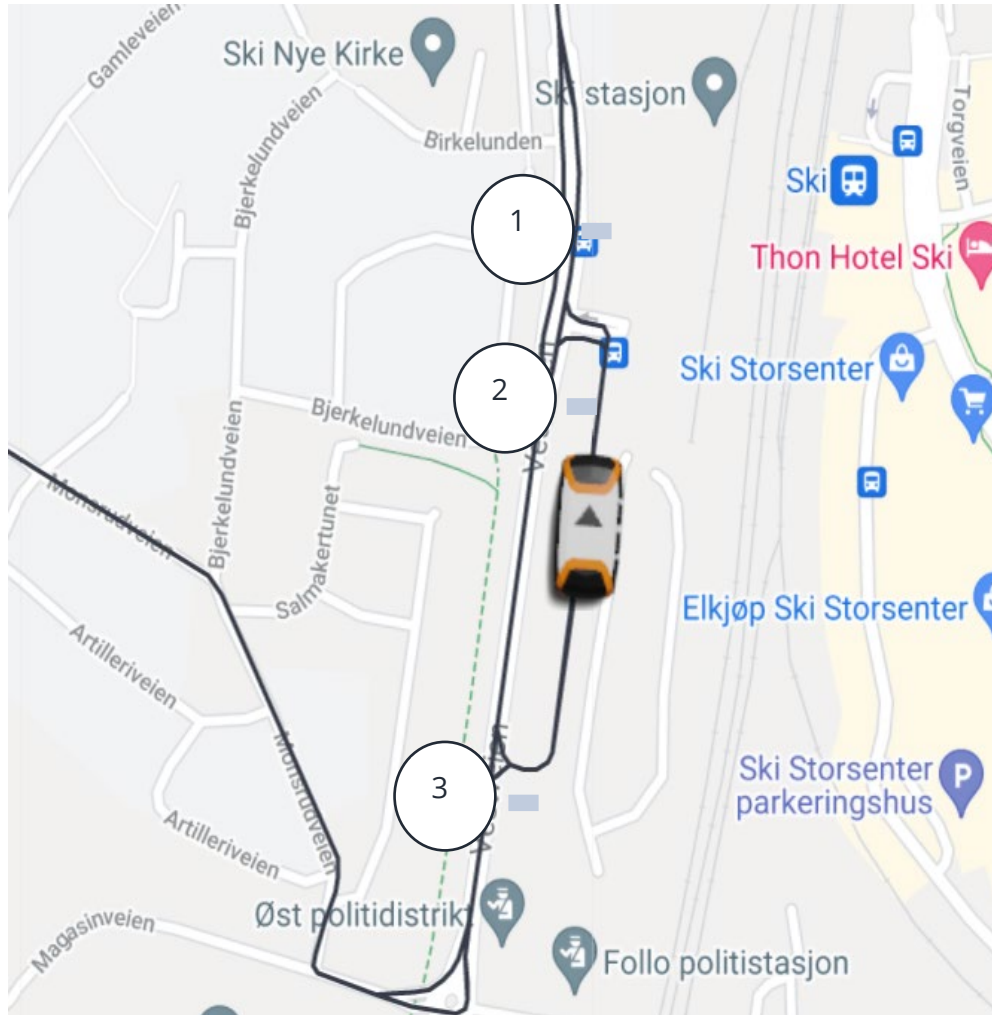


# WHY ACTIBUMP IN SKI?

- Passenger experience
- Average speed
- Accessibility
- Soft yielding
- Vulnerable road users
- Data exchange
- Emergency vehicles
- Sustainability
- Variable speed limit



# SUGGESTED PLACEMENT



# *edeva*

Karin Wiklund

+46 13 474 61 03

[Karin.wiklund@edeva.se](mailto:Karin.wiklund@edeva.se)

