

Historikk for temperaturer i Oslo

Weather statistics: temperatures in Oslo

2010-2021

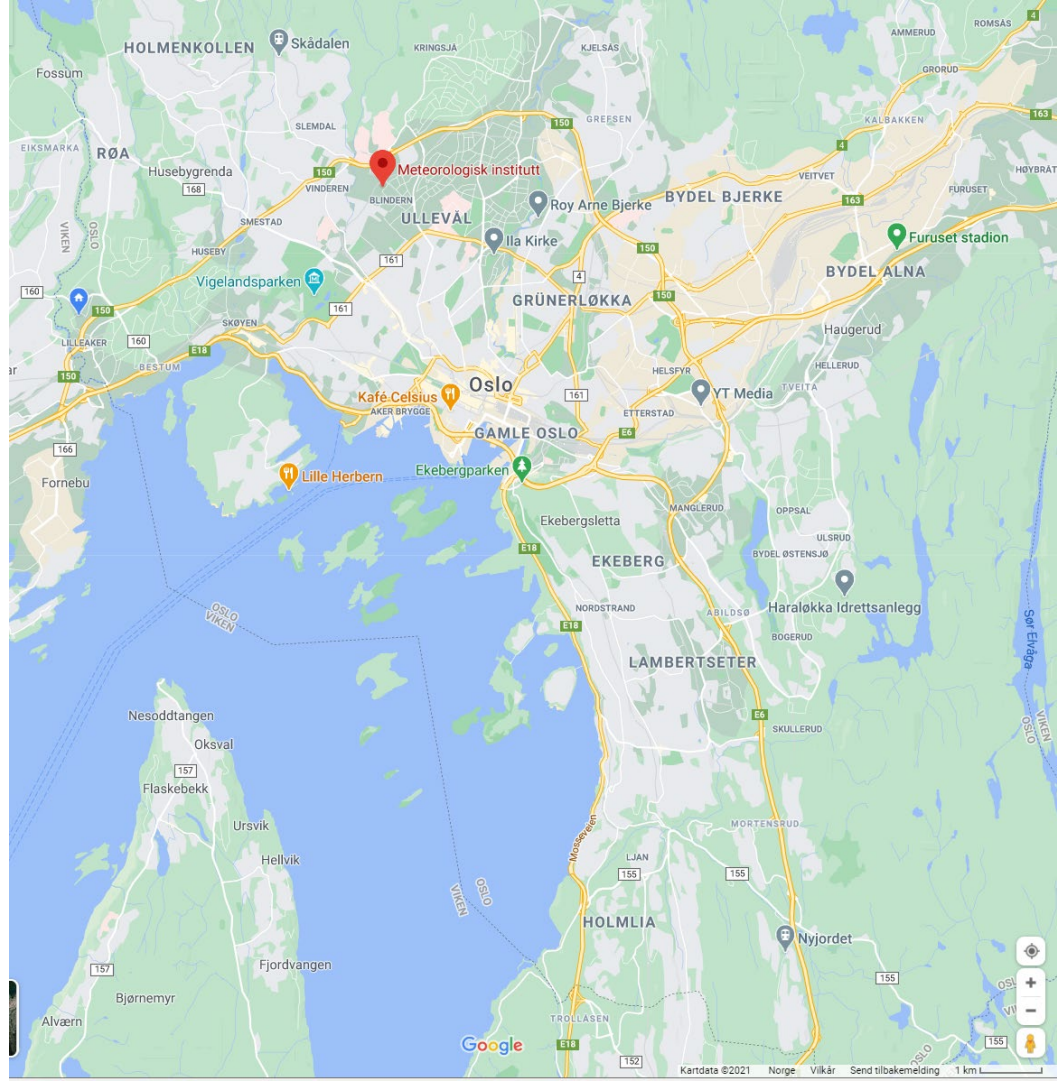
KonkurransinformasjonBussabud Indre By

09.02.2021

Ruter #

Konkurransinformasjon

- Dette dokumentet presenterer en oppsummering av statistikk for temperatur for værstasjonen Blindern i Oslo (Meteorologisk institutt – Norwegian weather centre)
- Statistikk og informasjon:
 - <https://www.yr.no/en/statistics/graph/1-73738/Norway/Oslo/Oslo/Blindern>
 - <https://www.yr.no/en/statistics/graph/1-73738/Norway/Oslo/Oslo/Blindern?q=2020>





Blindern ☆
Oslo (Norway), elevation 90 m

Q Search

☰ Menu

Forecast

Nearby

Map

Coast

Statistics

Last 13 months

Last 30 days

Last 24 hours

2021

Oslo (Blindern) observation station
0.3 km from Blindern

2021

[Show as table](#)

Summary



Temperature
2021

The temperature varied from
-14.5° to **4.5°**

Show details



Precipitation
2021

The wettest day measured
17.1 mm on 22 Jan.

Show details



Wind
2021

Strongest gust was **19.4 m/s** on
13 Jan.

Show details



Snow
2021

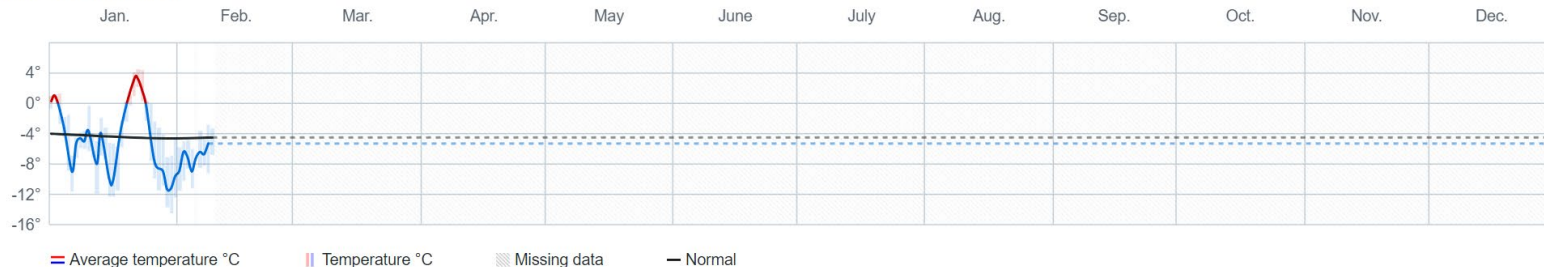
The snow depth measured
11.0 cm on 20 Jan.

Show details



Temperature

Jan. 2021–Dec. 2021



2020

[Show as table](#)

Summary



Temperature
2020

The temperature varied from **-7.5°** to **30.9°**

Show details



Precipitation
2020

The wettest day measured **47.0 mm** on 6 July

Show details



Wind
2020

Strongest gust was **23.2 m/s** on 13 Apr.

Show details



Snow
2020

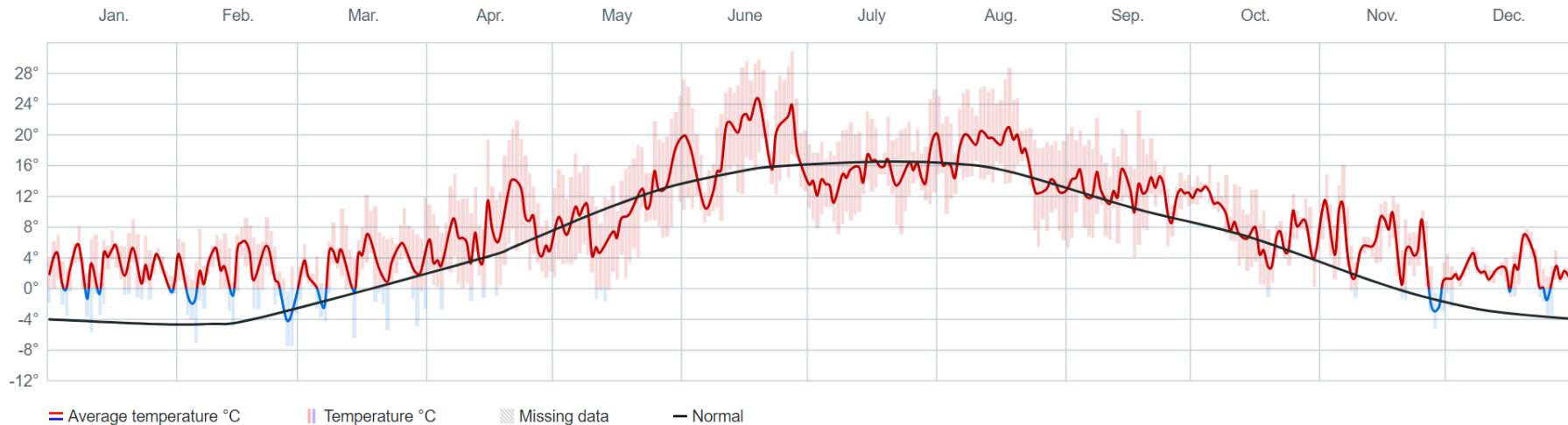
The snow depth measured **15.0 cm** on 1 Mar.

Show details

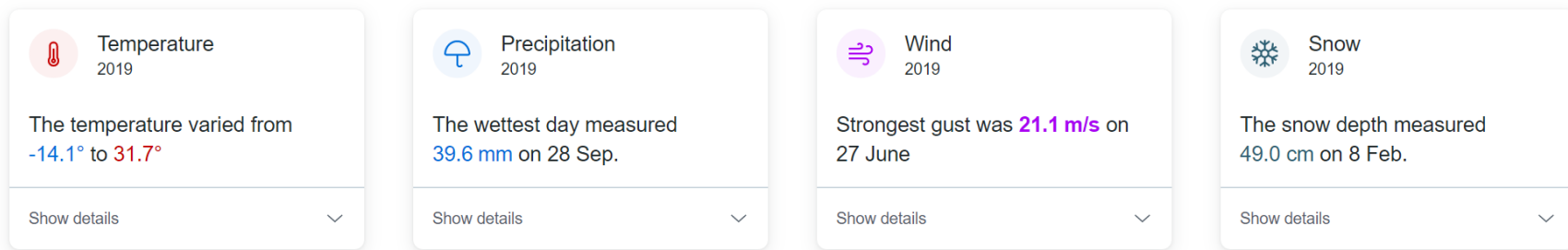


Temperature

Jan. 2020–Dec. 2020

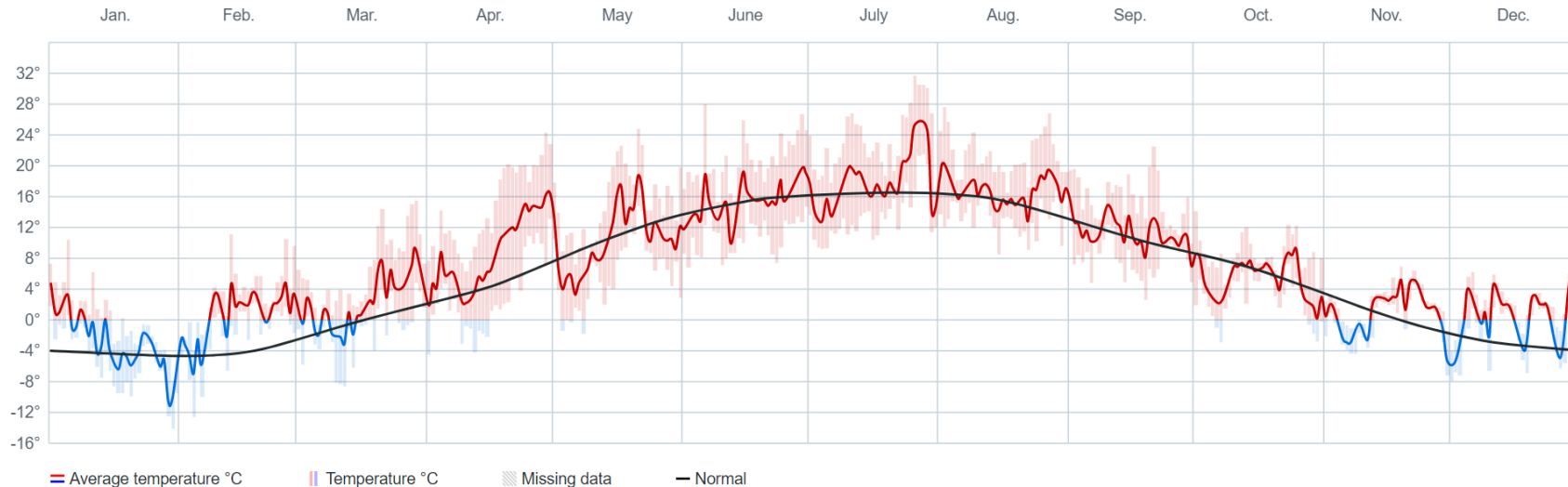


Summary



Temperature


Jan. 2019–Dec. 2019




2018

[Show as table](#)

Summary

 **Temperature**
2018

The temperature varied from **-15.9°** to **34.6°**

Show details 

 **Precipitation**
2018

The wettest day measured **41.5 mm** on 10 Sep.

Show details 

 **Wind**
2018

Strongest gust was **21.4 m/s** on 10 Aug.

Show details 

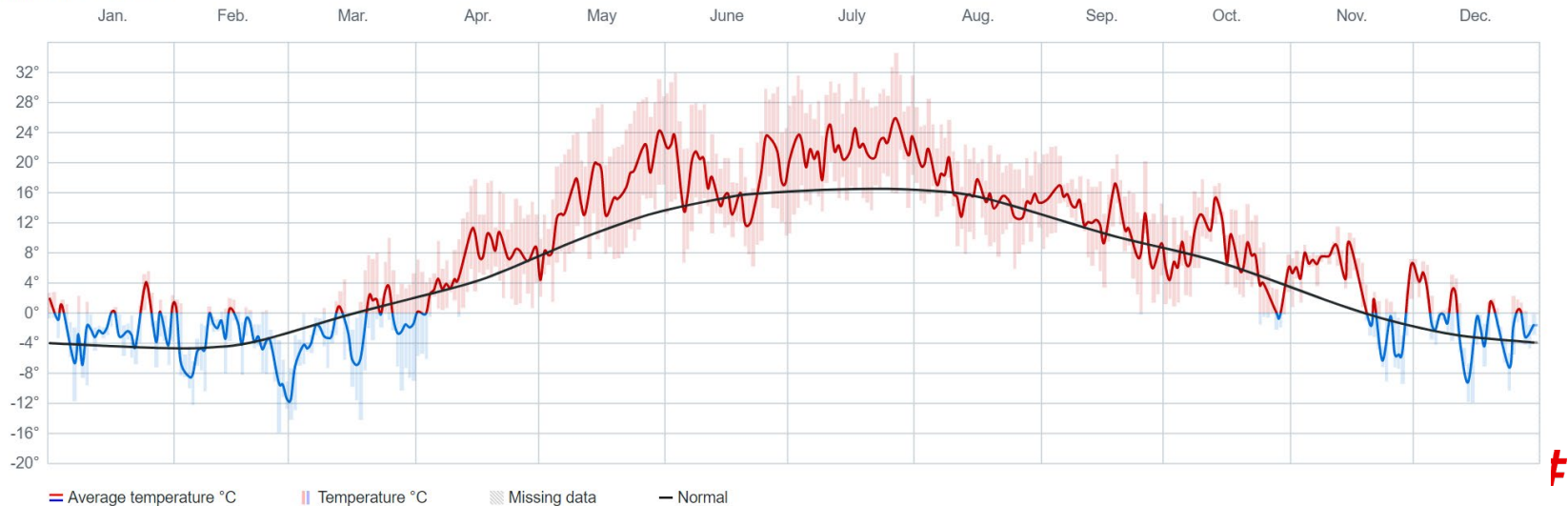
 **Snow**
2018

The snow depth measured **59.0 cm** on 12 Mar.

Show details 

Temperature

Jan. 2018–Dec. 2018



2017

[Show as table](#)

Summary



Temperature
2017

The temperature varied from
-12.6° to **27.3°**

Show details



Precipitation
2017

The wettest day measured
42.2 mm on 10 Aug.

Show details



Wind
2017

Strongest gust was **20.2 m/s** on 4 Jan.

Show details



Snow
2017

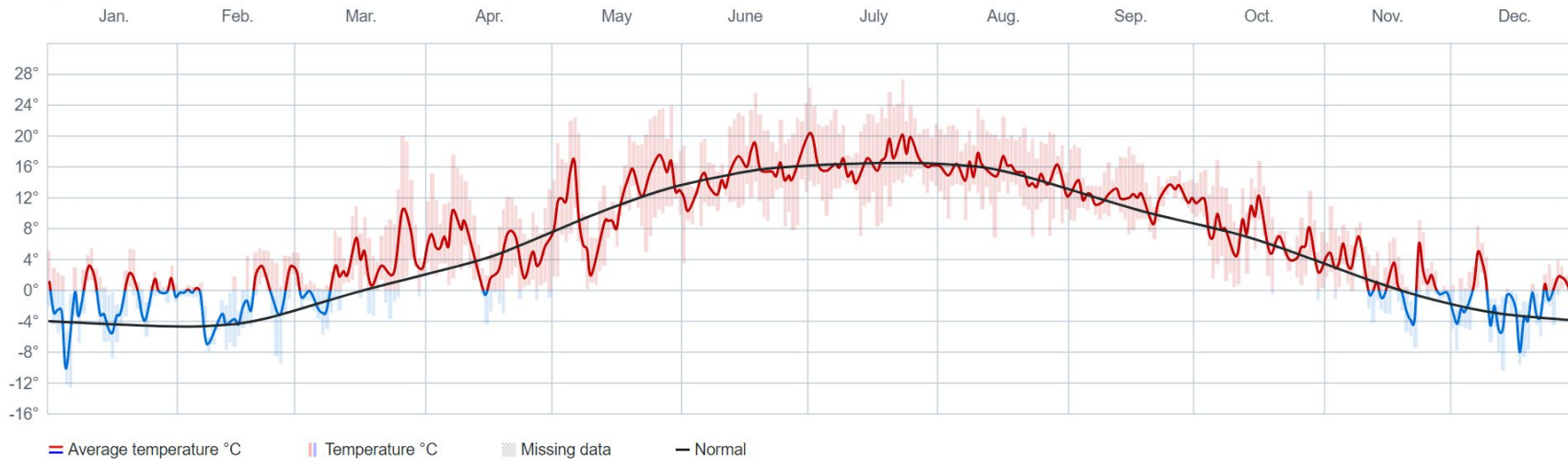
The snow depth measured
23.0 cm on 26 Feb.

Show details



Temperature

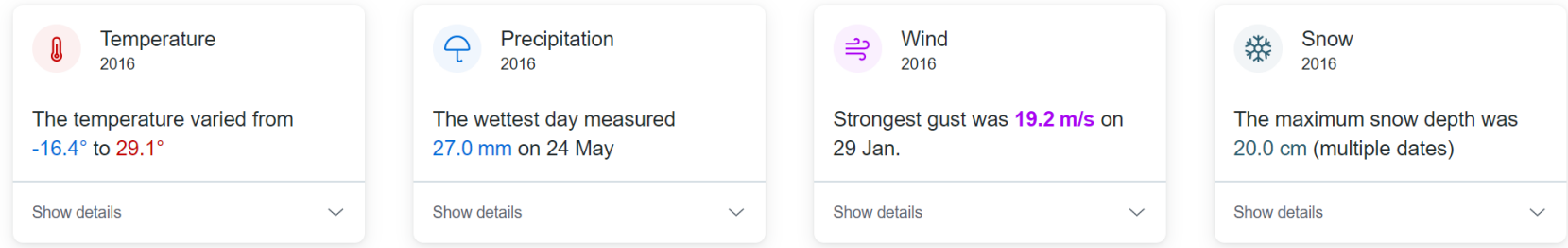
Jan. 2017–Dec. 2017



2016

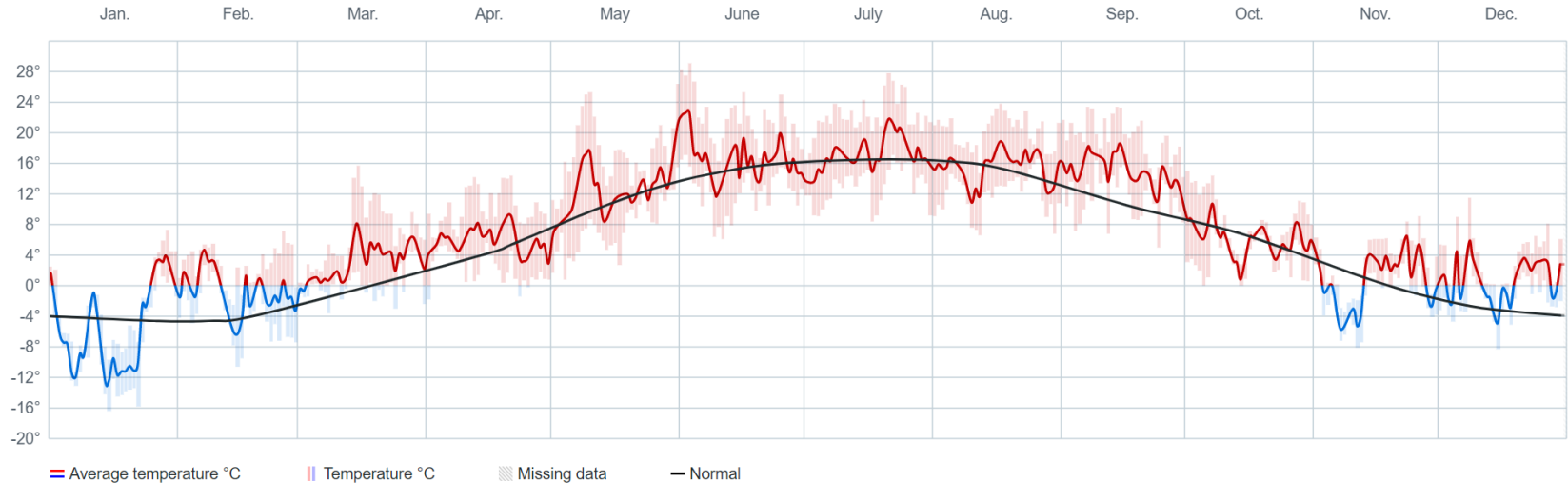
[Show as table](#)

Summary



Temperature

Jan. 2016–Dec. 2016



2015

[Show as table](#)

Summary



Temperature
2015

The temperature varied from
-12.8° to **27.0°**

Show details



Precipitation
2015

The wettest day measured
55.6 mm on 5 Aug.

Show details



Wind
2015

Strongest gust was **21.2 m/s** on 7 Feb.

Show details



Snow
2015

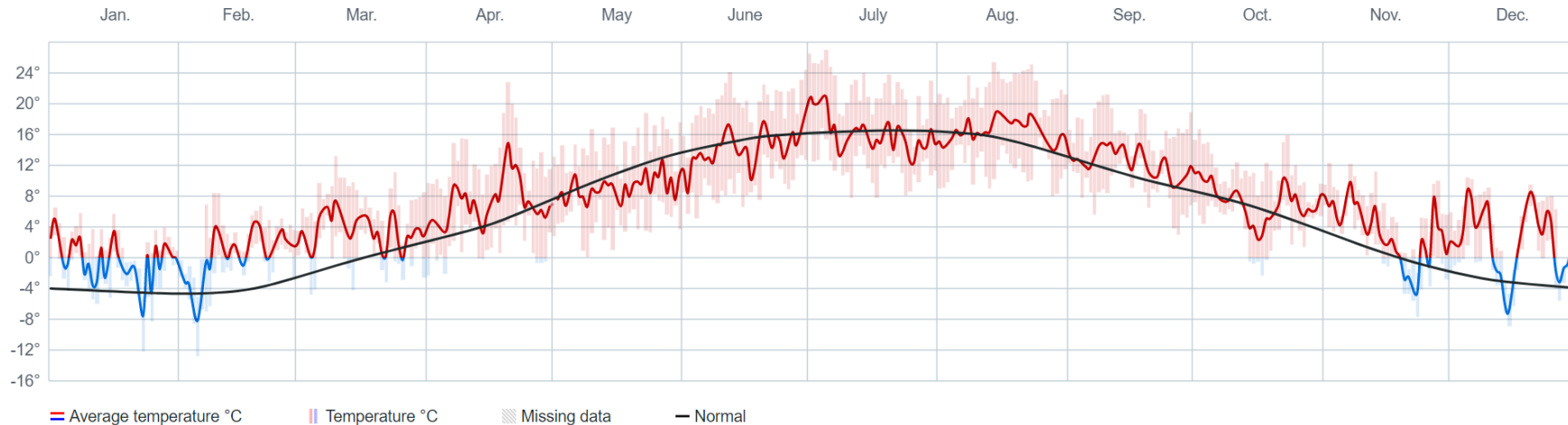
The maximum snow depth was
28.0 cm (multiple dates)

Show details



Temperature

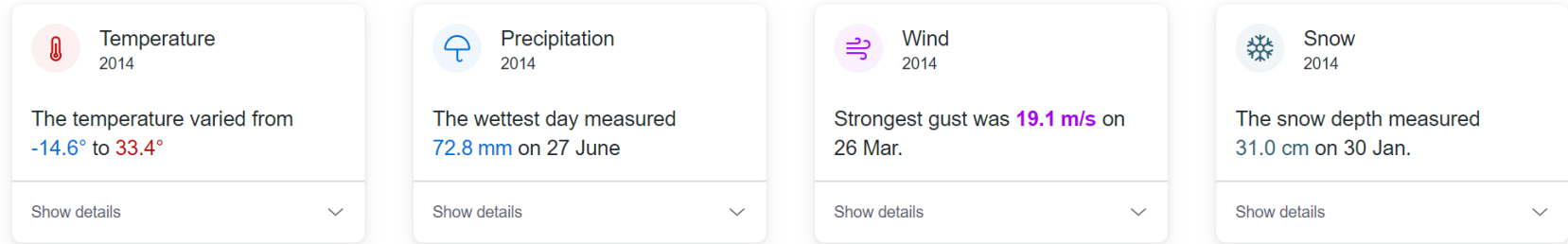
Jan. 2015–Dec. 2015



2014

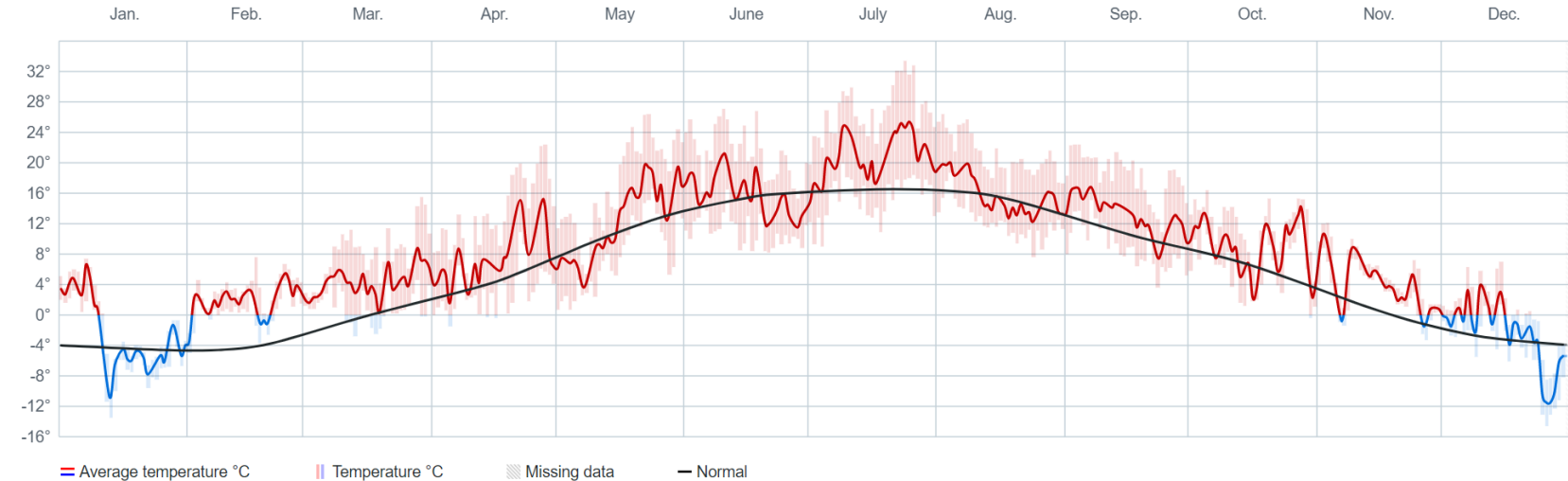
[Show as table](#)

Summary



Temperature

Jan. 2014–Dec. 2014



2013


[Show as table](#)

Summary

 Temperature
2013

The temperature varied from **-17.2°** to **29.0°**

Show details

 Precipitation
2013

The wettest day measured **27.3 mm** on 19 Nov.

Show details

 Wind
2013

The strongest gust was measured at **23.1 m/s** (flere datoer)

Show details

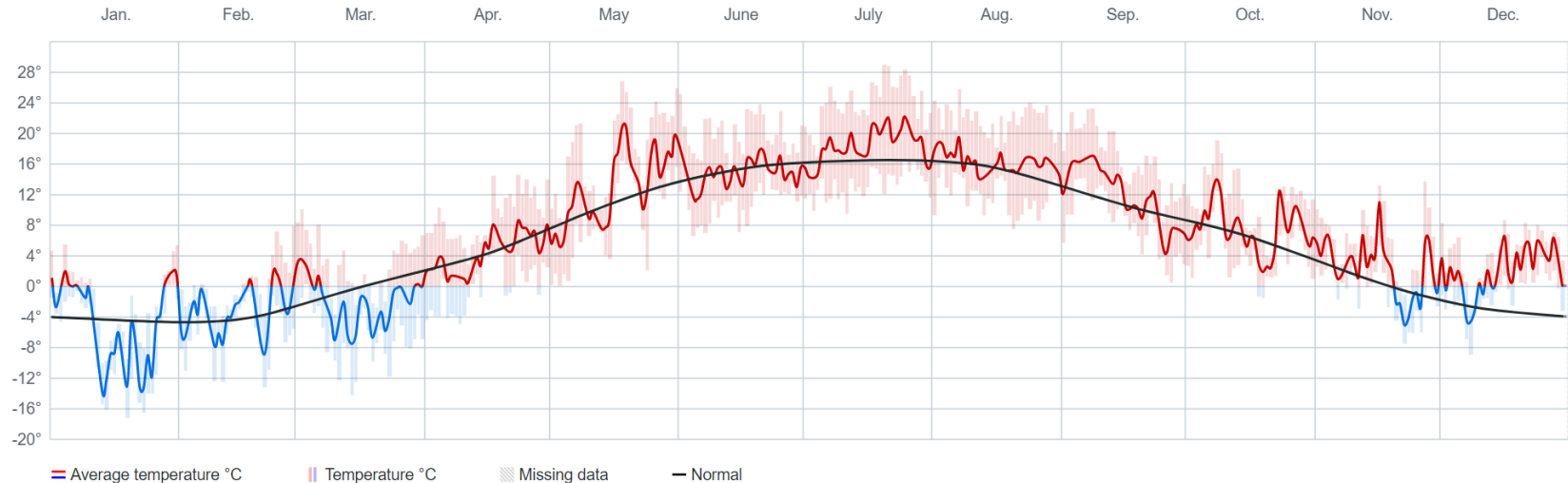
 Snow
2013

The snow depth measured **32.0 cm** on 16 Mar.

Show details

Temperature

Jan. 2013–Dec. 2013



2012

[Show as table](#)

Summary

 Temperature
2012

The temperature varied from
-17.1° to **29.8°**

Show details

 Precipitation
2012

The wettest day measured
35.7 mm on 11 July

Show details

 Wind
2012

Strongest gust was **20.5 m/s** on
15 Feb.

Show details

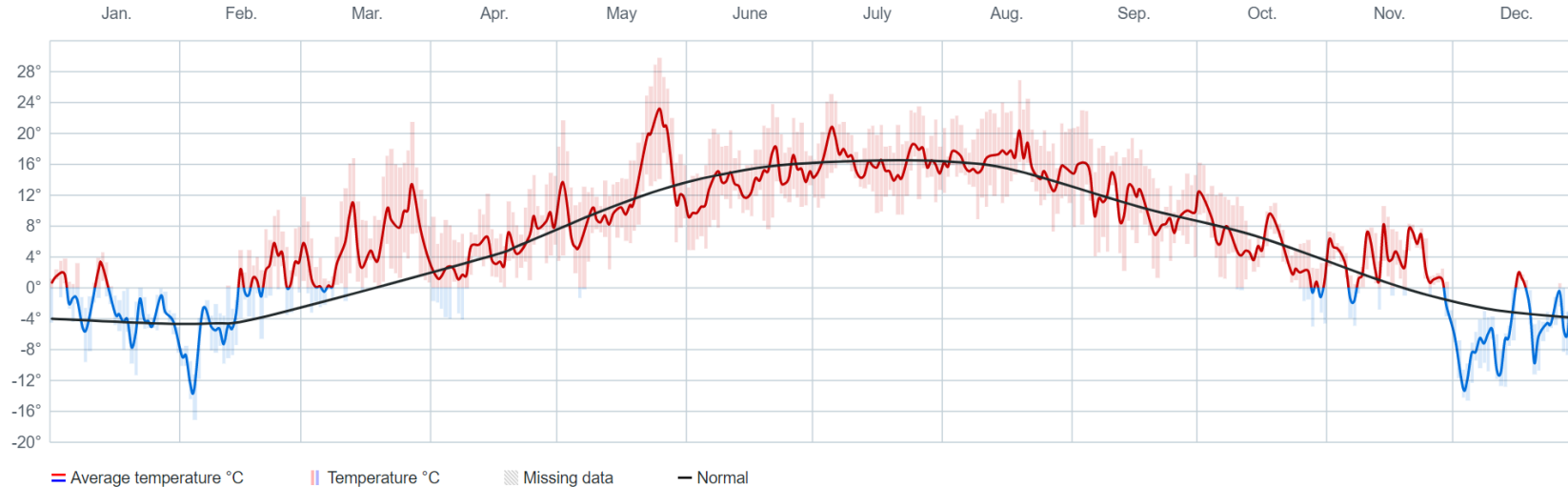
 Snow
2012

The maximum snow depth was
27.0 cm (multiple dates)

Show details

Temperature

Jan. 2012–Dec. 2012



2011

[Show as table](#)

Summary

 **Temperature**
2011

The temperature varied from **-18.1°** to **28.0°**

Show details 

 **Precipitation**
2011

The wettest day measured **32.2 mm** on 11 June

Show details 

 **Wind**
2011

Strongest gust was **23.0 m/s** on 27 Nov.

Show details 

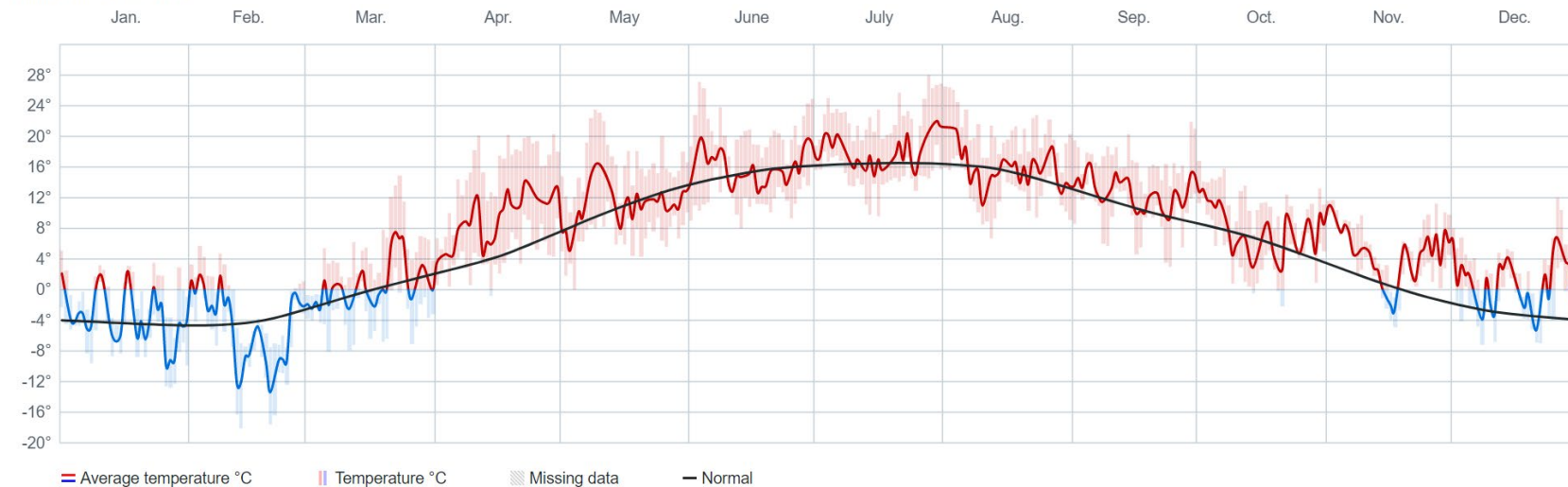
 **Snow**
2011

The snow depth measured **62.0 cm** on 11 Feb.

Show details 

Temperature

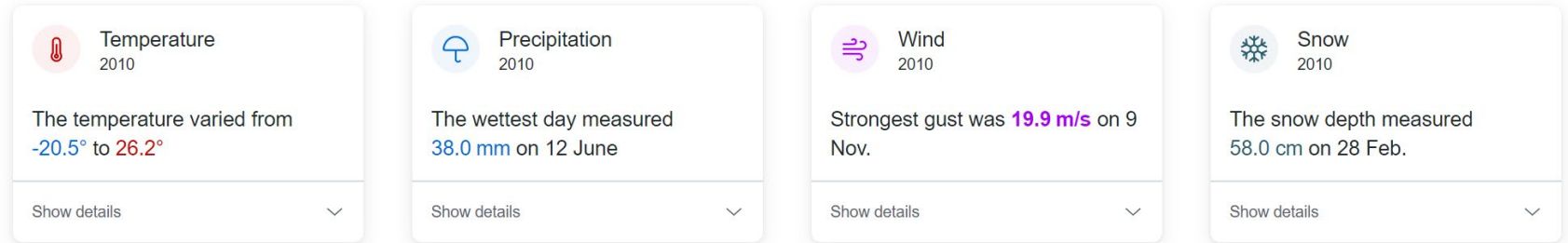
Jan. 2011–Dec. 2011



2010

[Show as table](#)

Summary



Temperature

Jan. 2010–Dec. 2010

