



# MIXMOVE

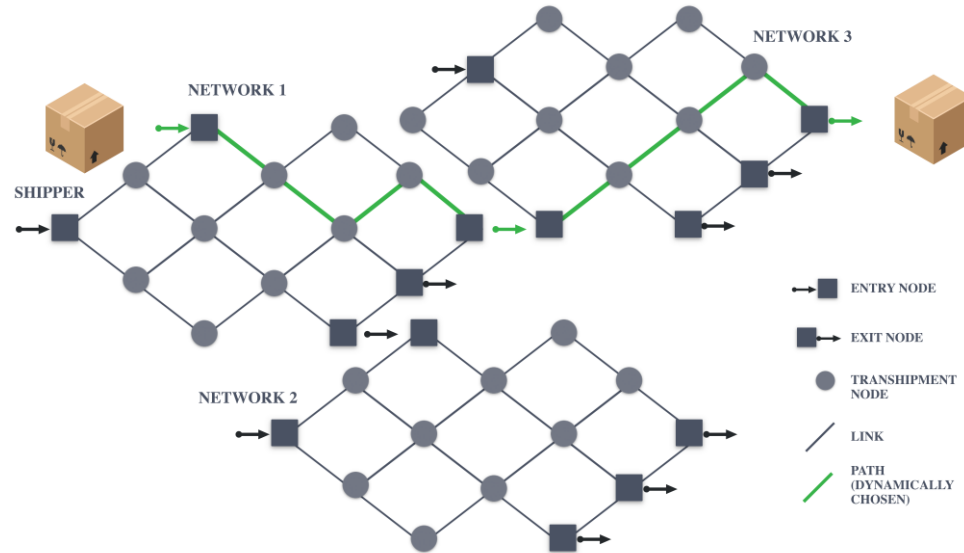
World's first cloud platform  
enlightening your logistic supply chain  
to give you an incredible new  
parcel level superpower

[www.mixmove.io](http://www.mixmove.io)

# Innovative approach to Logistics Execution

Making logistic sustainable

**MIXMOVE** is a **cloud** solution *supplementing* **existing infrastructure** (TMS, WMS, ERP), **optimising** and **visualising** logistics processes on **parcel level** in a supply chain **network**



## Key figures

**145 000 000 +**

Parcels scanned with our platform

**3 000 000 +**

Parcels scanned monthly

**€1.700 000**

ARR signed

**54%**

Growth in signed ARR last 12 months

**37**

Customers

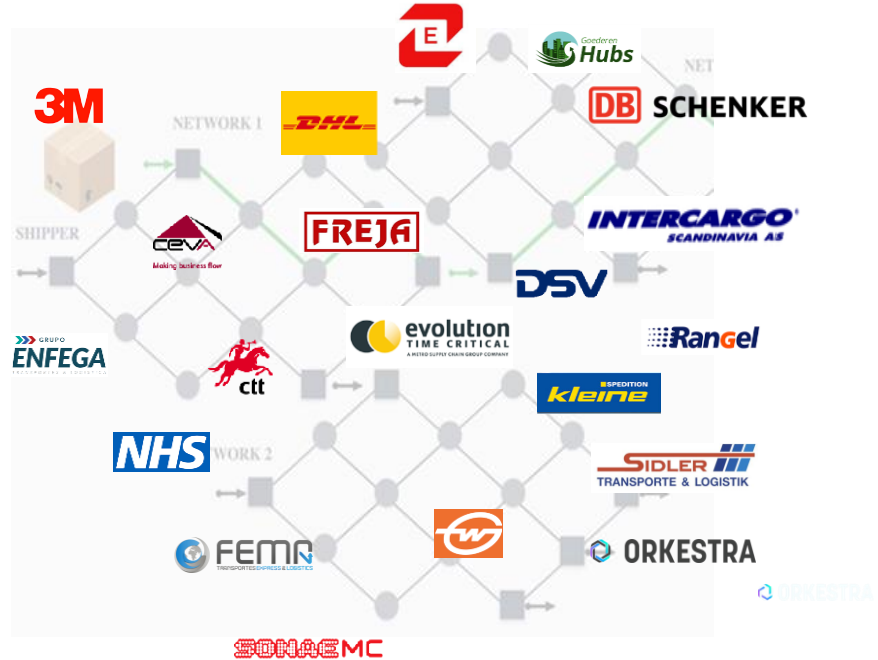
**90**

Installations (subscriptions)

**3**

Churn

## Customers logos



**90%**  
Capacity utilization

**35%**  
Cost Reduction

**50%**  
Proven reduction in CO2 by  
3M

## Awards



IPIC 2017

IPIC 2019

Gartner

COOL  
VENDOR  
2019

# NIXMOVE Urban Distribution



## Key figures

**145 000 000 +**

Parcels scanned with our platform

**3 000 000 +**

Parcels scanned monthly

**€1.700 000**

ARR signed

**54%**

Growth in signed ARR last 12 months

**37**

Customers

**90**

Installations (subscriptions)

**3**

Churn

## Customers logos



**90%**  
Capacity utilization

**35%**  
Cost Reduction

**50%**  
Proven reduction in CO2 by  
3M

## Awards



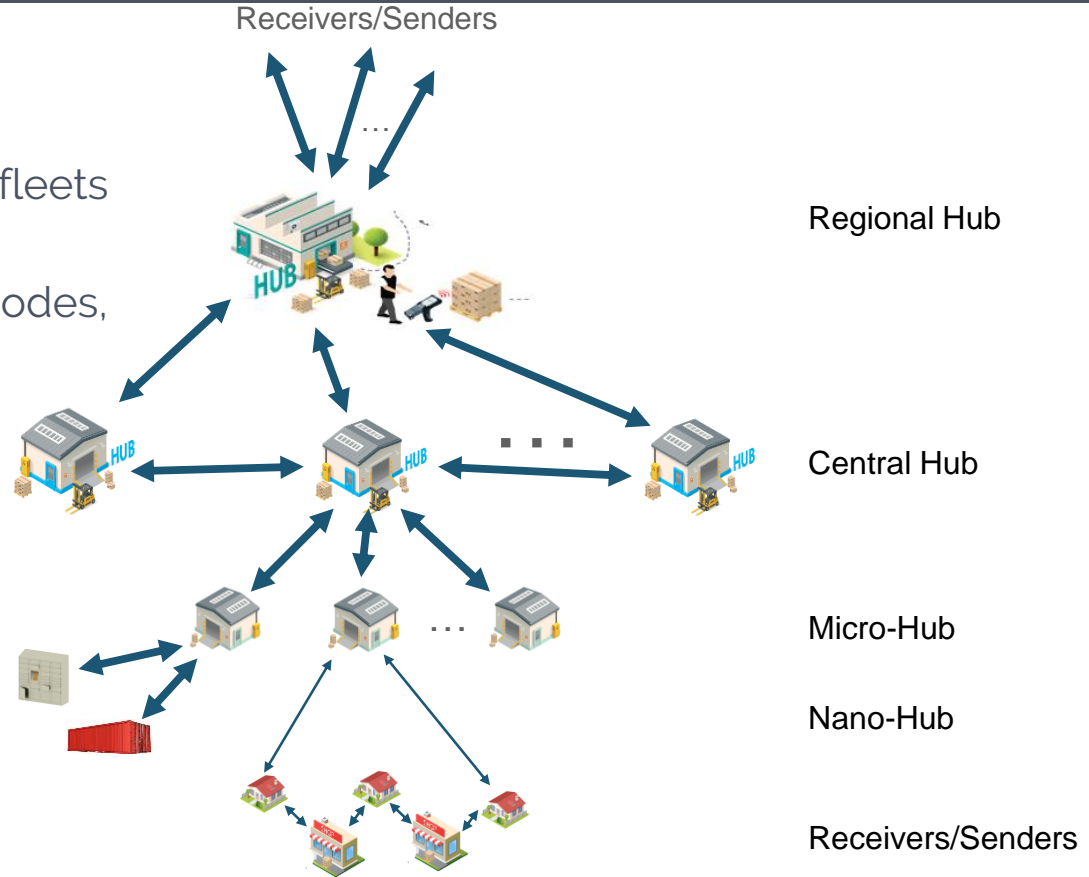
IPIC 2017

IPIC 2019

Gartner  
COOL  
VENDOR  
2019

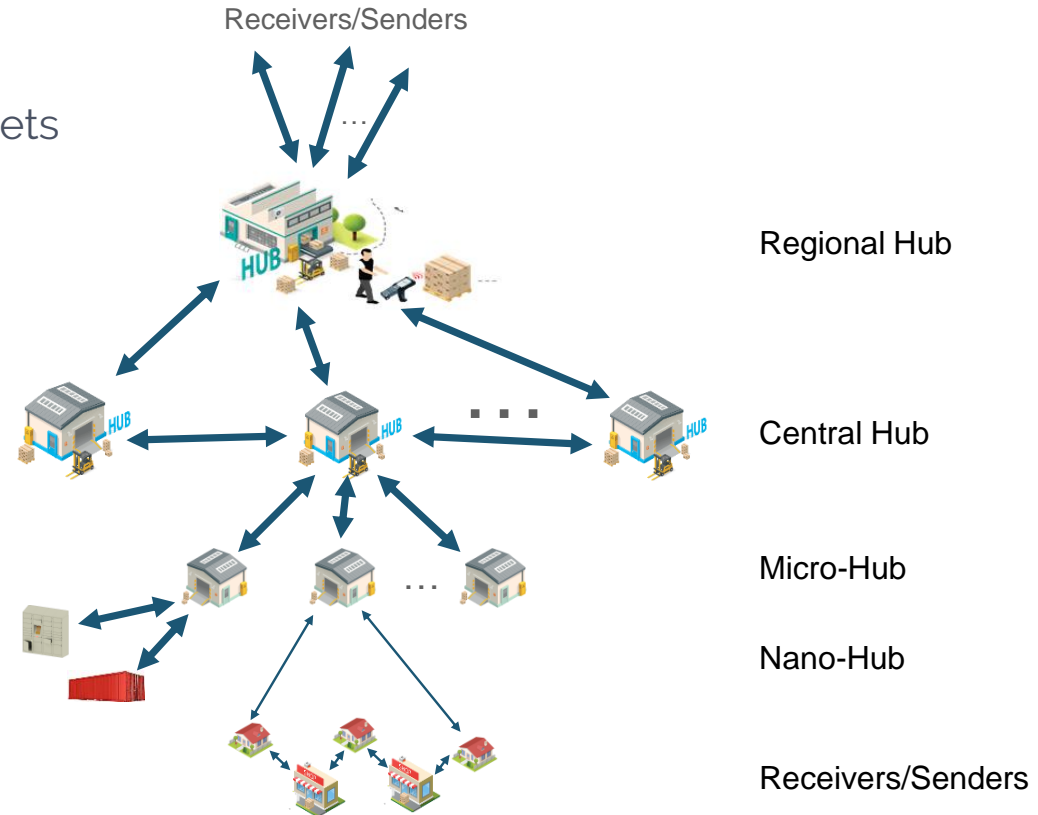
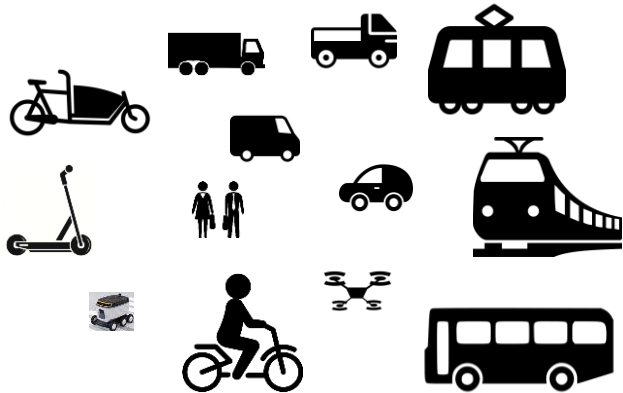
# Hierarchical Network of Hubs

- Making
  - the **best possible** use of fleets and assets and
  - **Smart** use of transport modes, alone or combined



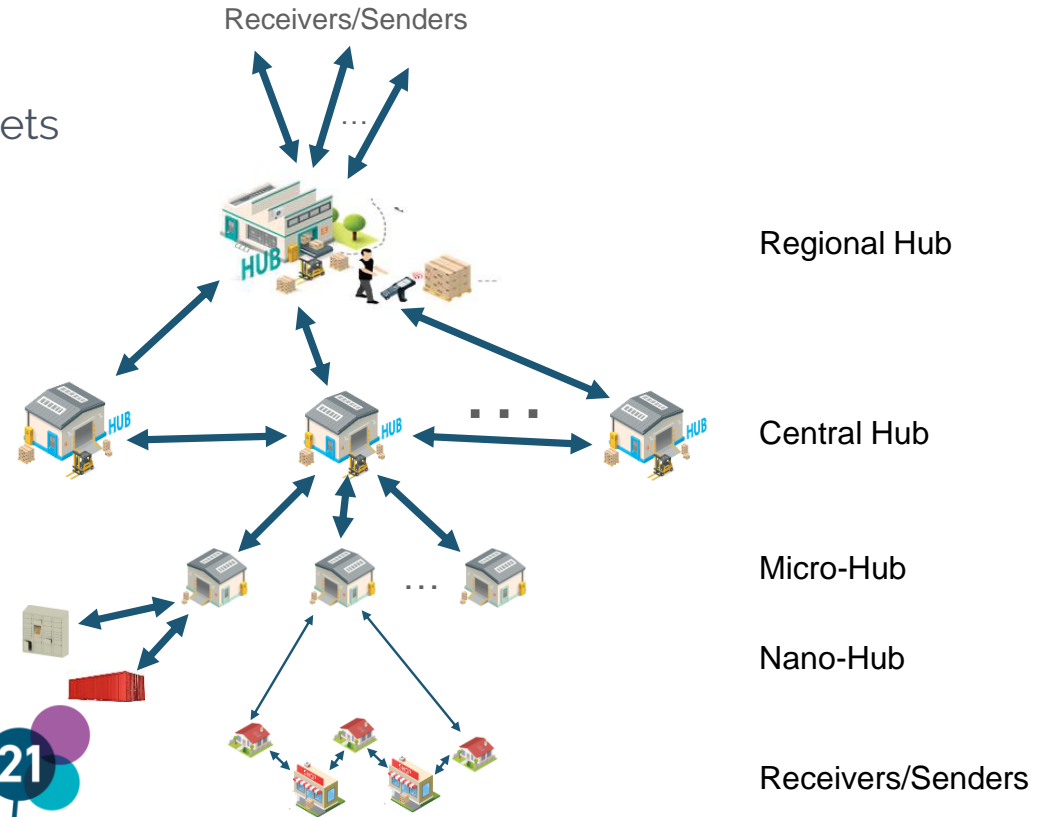
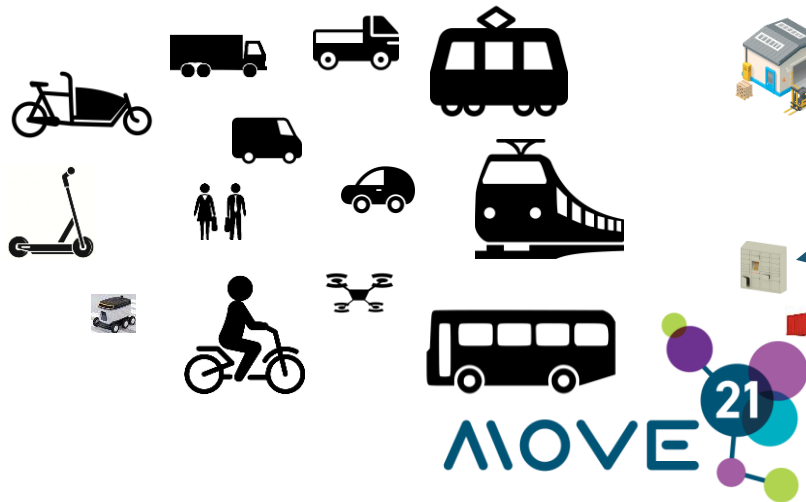
# Hierarchical Network of Hubs

- Making
  - the **best possible** use of fleets and assets and
  - **Smart** use of all transport modes, alone or combined



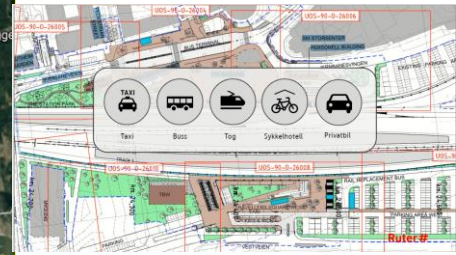
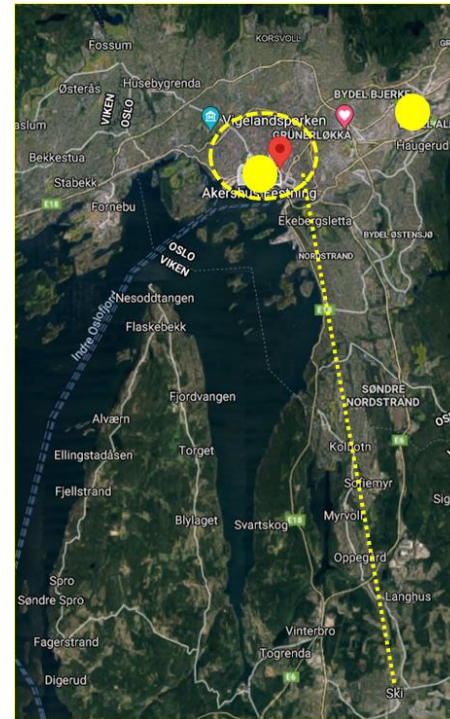
# Hierarchical Network of Hubs

- Making
  - the **best possible** use of fleets and assets and
  - **Smart** use of all transport modes, alone or combined



# Test Sites Oslo Living Lab

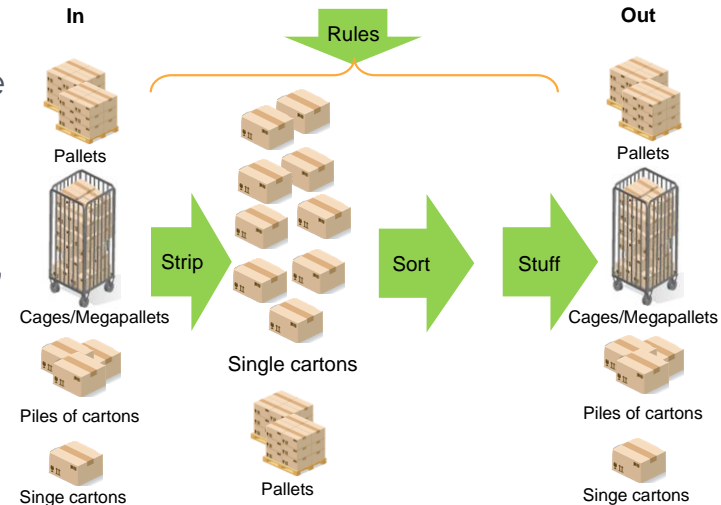
- Zero Emission Zone
- Filipstad, mobility centre
- Ski station





# The Hub is Key

- In urban distribution, “**all cargo**” should go via the **same hubs**, to ensure the best possible use of resources (minimum use of energy)
- Receives information about incoming cargo before the cargo arrives
- Consolidation
  - Making sure that all cargo that has the same “destination” travels together on the last mile.
  - Takes available last mile services into account
- Books last mile services
  - Using a catalogue of available transport services



# The Role of Ruter

- Ruter is a provider of transportation resources – Terminal-to-terminal or “all the way” to receivers
  - Scheduled services
  - On demand services
- Ruter’s services that may move goods is included in the appropriate catalogue in the hub so that they may be used.
- Ruter’s systems need to be able to receive, confirm or reject bookings of freight transport
- Ruter’s systems need to be able to provide status on movements and delivery

- Prerequisites
  - The concept of “neutral hubs” where all cargo is delivered for consolidated urban distribution need to be implemented
  - Ruter’s services need to be competitive

# Our products

## Real-time visibility and collaboration (Ship)

- A cloud platform that enables end-to-end supply chain visibility and control execution, in real time, across systems and logistics network partners



## Cross docking - order consolidation and reconstruction (X-Dock)

- Orchestrate the execution of cross-docking operations based on available resources, equipment and business rules. The de-/consolidation and reconstruction of orders as close to the customer as possible provides a unique opportunity for optimization



## Delivery execution (Deliver)

- A carrier centric product that develops route plans that meet all delivery objectives at minimal time, cost/mileage based on the firm's input rules and constraints.

